



**Price**  
**£350,000**

**Leasehold**

1x  1x  1x 

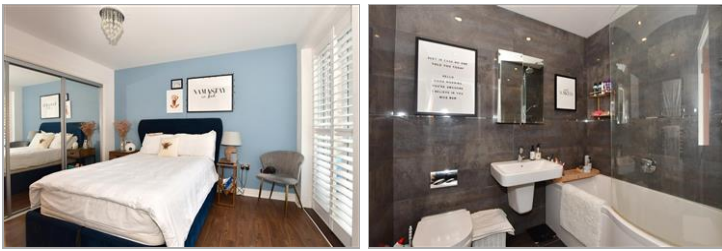
**Monroe House, Church  
Hill, Loughton, Essex,  
IG10**

**OVER 60?**

Secure this property  
for up to **59% less!**

 **DOUGLAS  
ALLEN**  
Helping you move forwards





## Main features

- Second floor flat with allocated parking
- Within short walk of Loughton High Road shops
- Modern open plan living with balcony
- Close to Loughton station
- Excellent condition throughout

## Accommodation

### SECOND FLOOR

Entrance Hall

Kitchen/Living Area: 19'11 x 13'9  
(6.07m x 4.19m)

Balcony

Bedroom: 11'7 up to fitted wardrobes x 9'8 (3.53m x 2.95m)

Bathroom

Utility Room: 5'6 x 3'8 (1.68m x 1.12m)

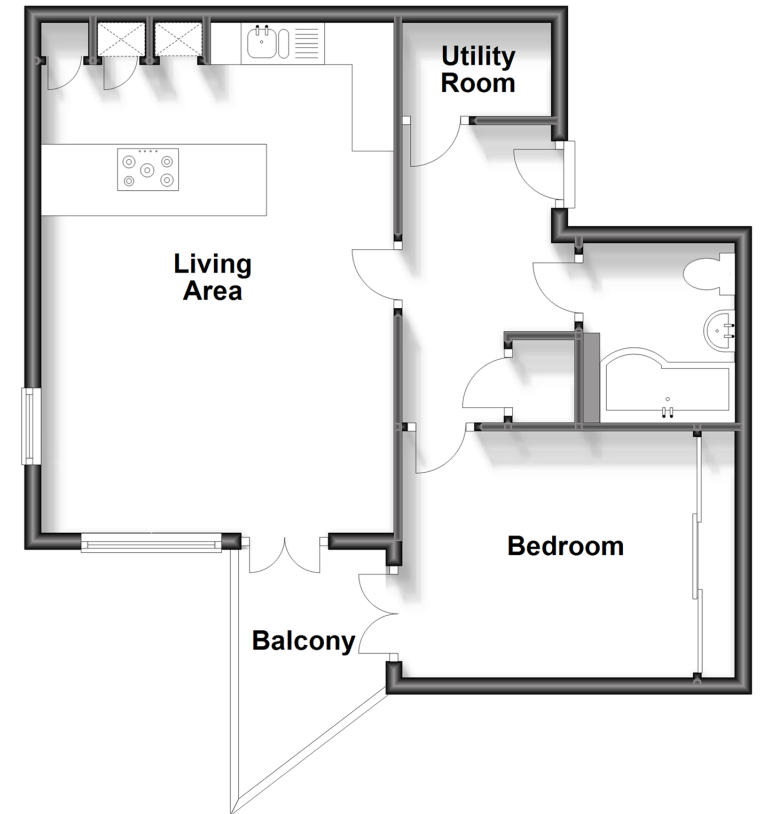
### OUTSIDE

Allocated Parking

Communal Gardens

### Second Floor

Approx. 51.7 sq. metres (556.5 sq. feet)



**Call Loughton - 020 8502 1326 ■ [douglasallen.co.uk](http://douglasallen.co.uk)**

- A private rental licensing scheme applies to some properties in this area, please contact us before proceeding
- Legal advice should be taken to verify fixtures/fittings, planning, alterations and/or lease details
- Appliances & services are untested, dimensions are approximate and floor plans are not to scale
- Through a Homewise Home For Life Plan people aged 60+ can secure this property for up to 59% less, by purchasing a Lifetime Lease.



52317175/20240207/JC/LL