



Price

£290,000

Leasehold

1x  1x  1x 

**Cobalt Place, Church
Hill, Loughton, Essex,
IG10**

OVER 60?

Secure this property
for up to **59% less!**



Video Tour available



**DOUGLAS
ALLEN**

Helping you move forwards



Main features

- First floor purpose built flat close to the High Road
- In immaculate condition
- Allocated parking space
- Modern lounge/diner/kitchen with integrated Smeg appliances
- Good selection of bus routes in the immediate area
- Small selection of shops close by

Accommodation

FIRST FLOOR

Entrance Hall

Living Area : 26'1 x 10'0 (7.96m x 3.05m)

Bedroom : 16'0 x 8'1 (4.88m x 2.47m)

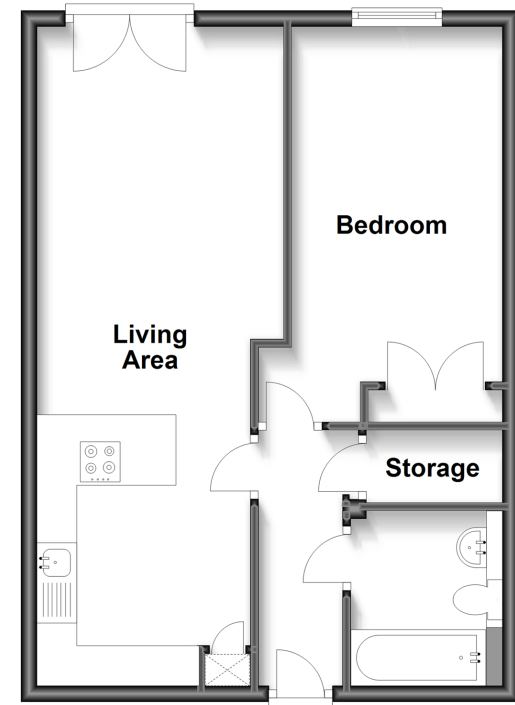
Bathroom

OUTSIDE

Allocated Parking Space

First Floor

Approx. 48.0 sq. metres (516.3 sq. feet)



Call Loughton - 020 8502 1326 ■ douglasallen.co.uk

- A private rental licensing scheme applies to some properties in this area, please contact us before proceeding
- Legal advice should be taken to verify fixtures/fittings, planning, alterations and/or lease details
- Appliances & services are untested, dimensions are approximate and floor plans are not to scale
- Through a Homewise Home For Life Plan people aged 60+ can secure this property for up to 59% less, by purchasing a Lifetime Lease.



52317119/20230614/CP1/BB