



Price

£850,000

Freehold

4x  2x  1x 

**The Summit, Loughton,
Essex, IG10**

OVER 60?

Secure this property
for up to **59% less!**



Video Tour available



**DOUGLAS
ALLEN**

Helping you move forwards



Main features

- Situated in a quiet sought after cul-de-sac
- Close to Epping Forest's conservation area
- In good condition throughout
- En-suite shower room
- Staples Road School catchment area
- Being sold chain free

Accommodation

GROUND FLOOR

Entrance Porch
 Entrance Hall
 Lounge/Diner : 24'8 x 12'7 (7.52m x 3.84m)
 Kitchen/Breakfast Room: 21'8 x 8'6 (6.61m x 2.59m)
 Cloakroom

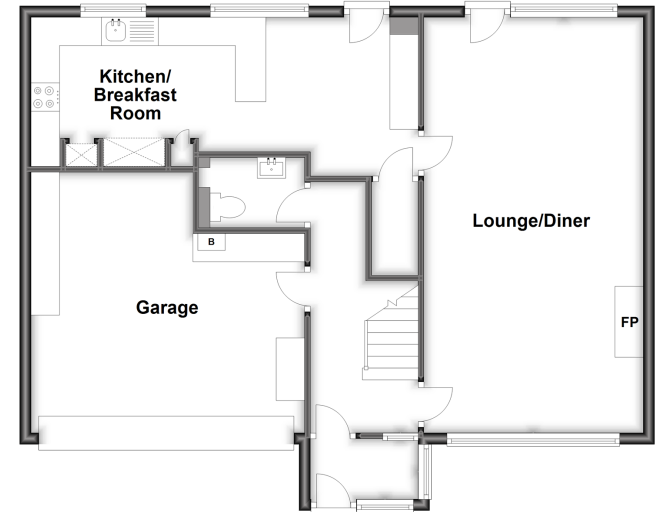
FIRST FLOOR

Landing
 Bedroom 1: 12'0 x 9'6 (3.66m x 2.90m)
 En-Suite Bathroom
 Bedroom 2 : 12'8 x 10'2 (3.86m x 3.10m)
 Bedroom 3 : 12'1 x 9'9 (3.69m x 2.97m)
 Bedroom 4 : 8'7 x 7'3 (2.62m x 2.21m)
 Shower Room

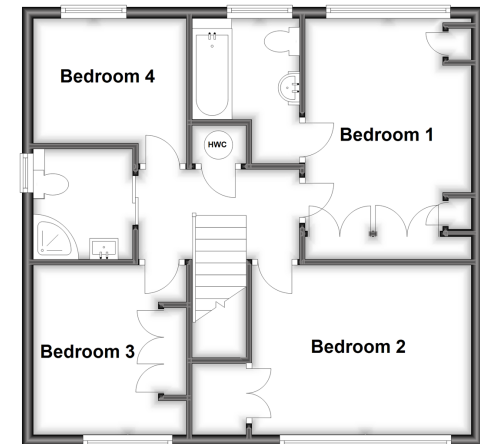
OUTSIDE

Garage
 Off Street Parking
 Rear Garden

Ground Floor
 Approx. 58.0 sq. metres (624.7 sq. feet)



First Floor
 Approx. 56.4 sq. metres (607.5 sq. feet)



Call Loughton - 020 8502 1326 ■ douglasallen.co.uk

- A private rental licensing scheme applies to some properties in this area, please contact us before proceeding
- Legal advice should be taken to verify fixtures/fittings, planning, alterations and/or lease details
- Appliances & services are untested, dimensions are approximate and floor plans are not to scale
- Through a Homewise Home For Life Plan people aged 60+ can secure this property for up to 59% less, by purchasing a Lifetime Lease.