



Price

£270,000

Leasehold

2x  1x  1x 

**Homecherry House, High
Road, Loughton, Essex,
IG10**

OVER 60?

Secure this property
for up to **59% less!**



Video Tour available



**DOUGLAS
ALLEN**

Helping you move forwards



Main features

- Second floor retirement flat with a lift to all floors
- Short walk to the High Road and station
- Bus routes within the immediate area
- Communal lounge and gardens
- On-site day time House Manager, CCTV and 24-hour careline
- Being sold chain free

Accommodation

SECOND FLOOR

Entrance Hall

Lounge/Dining Area: 14'7 x 13'10
(4.45m x 4.22m)

Kitchen: 11'6 x 6'0 (3.51m x 1.83m)

Bedroom 1: 14'3 x 9'10 (4.35m x 3.00m)

Bedroom 2: 9'10 x 8'9 (3.00m x 2.67m)

Shower Room

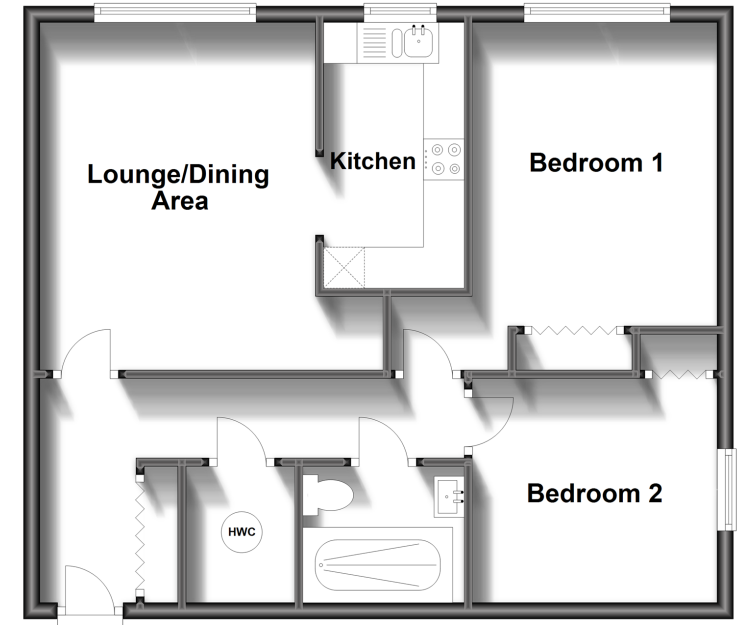
OUTSIDE

Communal Garden

Unallocated Communal Parking

Second Floor

Approx. 58.6 sq. metres (630.6 sq. feet)



Call Loughton - 020 8502 1326 ■ douglasallen.co.uk

- A private rental licensing scheme applies to some properties in this area, please contact us before proceeding
- Legal advice should be taken to verify fixtures/fittings, planning, alterations and/or lease details
- Appliances & services are untested, dimensions are approximate and floor plans are not to scale
- Through a Homewise Home For Life Plan people aged 60+ can secure this property for up to 59% less, by purchasing a Lifetime Lease.



52316975/20221122/IC/LL