



OVER 60?

Secure this property
for up to **59% less!**

Price

£375,000

Leasehold

1x  1x  1x 

**Boleyn Court, Epping
New Road, Buckhurst
Hill, Essex, IG9**



**DOUGLAS
ALLEN**

Helping you move forwards



Main features

- First floor flat situated within a prestigious gated development
- Lift access to all floors
- Allocated parking space
- Excellent size living space
- Under floor and ceiling heating
- Extensive communal garden, incorporating a tennis court

Accommodation

FIRST FLOOR

Entrance Hall

Lounge/Diner: 16'6 x 12'10 (5.03m x 3.91m)

Balcony

Kitchen : 8'5 x 7'2 (2.57m x 2.19m)

Bedroom : 12'8 x 11'5 (3.86m x 3.48m)

Bathroom

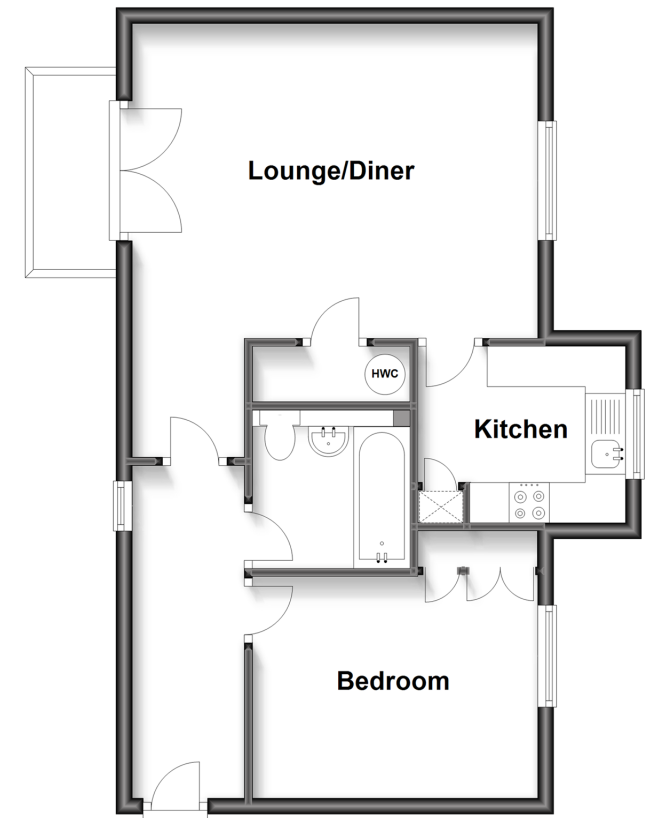
OUTSIDE

Communal Garden

Allocated Parking Space

First Floor

Approx. 50.7 sq. metres (545.8 sq. feet)



Call Loughton - 020 8502 1326 ■ douglasallen.co.uk

- A private rental licensing scheme applies to some properties in this area, please contact us before proceeding
- Legal advice should be taken to verify fixtures/fittings, planning, alterations and/or lease details
- Appliances & services are untested, dimensions are approximate and floor plans are not to scale
- Through a Homewise Home For Life Plan people aged 60+ can secure this property for up to 59% less, by purchasing a Lifetime Lease.