



OVER 60?

Secure this property
for up to **59% less!**

Price

£625,000

Freehold

3x  1x  1x 

**Pyrles Lane, Loughton,
Essex, IG10**



**DOUGLAS
ALLEN**

Helping you move forwards



Main features

- Refurbished to a high standard throughout
- Beautiful modern kitchen/diner
- Close to a selection of good ofsted rated schools
- Within walking distance of Epping Forest
- Being sold chain free

Accommodation

GROUND FLOOR

Entrance Hall

Lounge : 12'6 x 12'2 (3.81m x 3.71m)

Kitchen/Dining/Family Area: 16'7 x 15'6 (5.06m x 4.73m)

Cloakroom

FIRST FLOOR

Landing

Bedroom 1 : 12'5 x 11'2 (3.79m x 3.41m)

Bedroom 2: 11'6 x 9'3 (3.51m x 2.82m)

Bedroom 3 : 8'5 x 7'9 (2.57m x 2.36m)

Bathroom

Separate Toilet

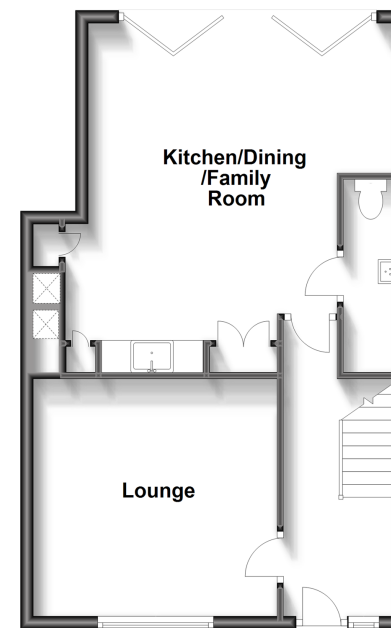
OUTSIDE

Front Garden

Rear Garden

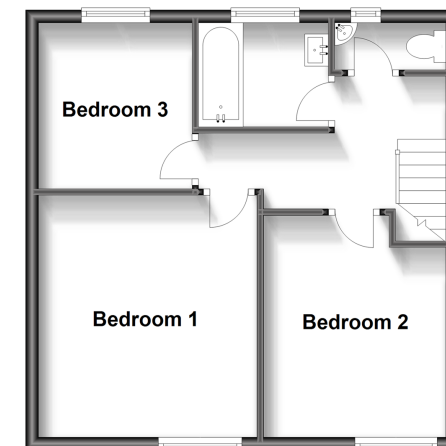
Ground Floor

Approx. 49.6 sq. metres (533.7 sq. feet)



First Floor

Approx. 41.1 sq. metres (442.2 sq. feet)



Call Loughton - 020 8502 1326 ■ douglasallen.co.uk

- A private rental licensing scheme applies to some properties in this area, please contact us before proceeding
- If buying to let, the energy rating will need to be improved to at least 'E' rating before you can let the property
- Legal advice should be taken to verify fixtures/fittings, planning, alterations and/or lease details
- Appliances & services are untested, dimensions are approximate and floor plans are not to scale
- Through a Homewise Home For Life Plan people aged 60+ can secure this property for up to 59% less, by purchasing a Lifetime Lease.

