



OVER 60?

Secure this property
for up to **59% less!**

Price

£525,000

Leasehold

3x  2x  1x 

**Davey Gardens, Barking,
Essex, IG11**



**DOUGLAS
ALLEN**

Helping you move forwards



Main features

- This delightful end of terrace house has a spacious rear garden
- Ground floor cloakroom
- Installed solar panels
- Allocated parking
- Great transport links with rail, uber boat & bus routes
- Shops and local amenities nearby
- Schools within close proximity

Accommodation

GROUND FLOOR

Entrance Hall

Lounge/Diner: 18'1 x 15'1 (5.52m x 4.60m)

Kitchen: 9'8 x 8'8 (2.95m x 2.64m)

Cloakroom

FIRST FLOOR

Landing

Bedroom 1: 14'9 x 9'9 (4.50m x 2.97m)

En-Suite Shower Room

Bedroom 2: 17'2 x 9'9 (5.24m x 2.97m)

Bedroom 3: 12'0 x 7'8 (3.66m x 2.34m)

Bathroom

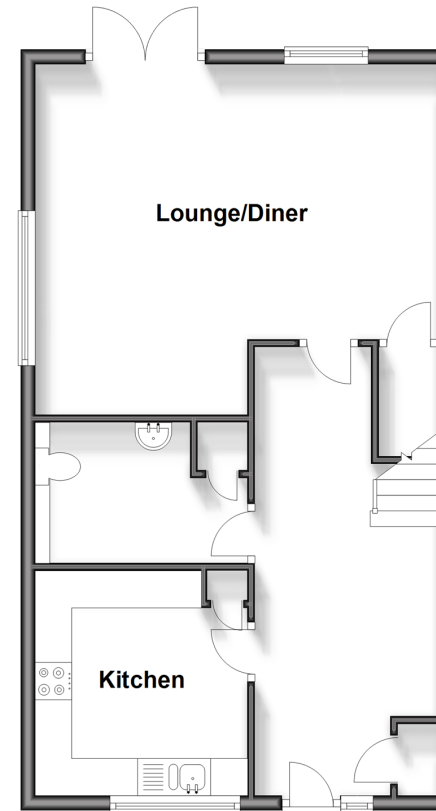
OUTSIDE

Rear Garden

Allocated Parking

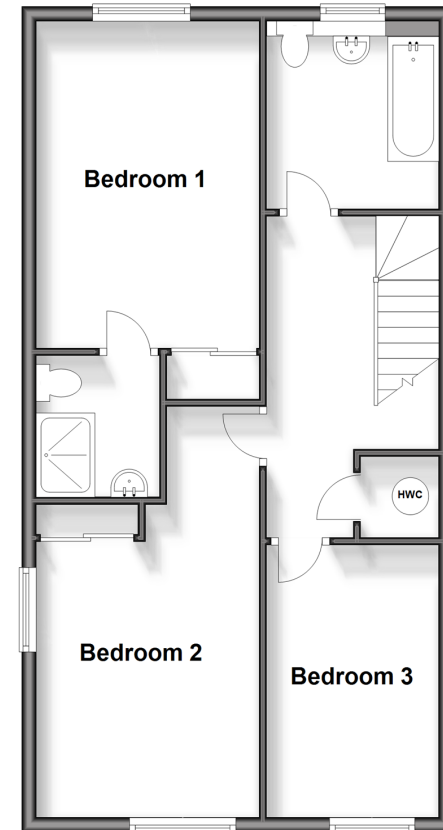
Ground Floor

Approx. 54.2 sq. metres (583.6 sq. feet)



First Floor

Approx. 59.0 sq. metres (635.4 sq. feet)



Call Ilford - 020 8518 0044 ■ douglasallen.co.uk

- A private rental licensing scheme applies to some properties in this area, please contact us before proceeding
- Legal advice should be taken to verify fixtures/fittings, planning, alterations and/or lease details
- Appliances & services are untested, dimensions are approximate and floor plans are not to scale
- Through a Homewise Home For Life Plan people aged 60+ can secure this property for up to 59% less, by purchasing a Lifetime Lease.



52016751/20240405/CN/NK