



OVER 60?

Secure this property
for up to **59% less!**

Price

£300,000

Leasehold

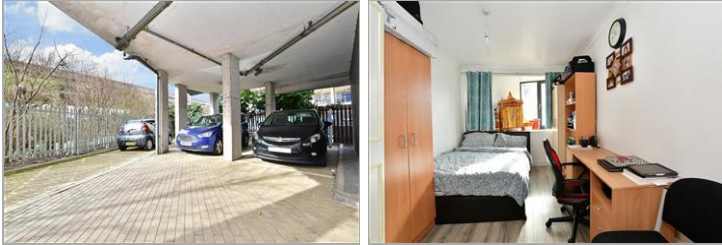
2x  1x  1x 

**Roding Court, Mill Road,
Ilford, Essex, IG1**



**DOUGLAS
ALLEN**

Helping you move forwards



Main features

- Well maintained fourth floor apartment
- Open plan living
- Allocated parking & balcony
- Walking distance to Ilford station & Elizabeth Line
- Close to Exchange Shopping Centre & Central Library
- Ideal for first time buyers

Accommodation

FOURTH FLOOR

Entrance Hall

Lounge/Kitchen/Dining Room: 20'3 x 11'6 (6.18m x 3.51m)

Bedroom 1: 14'0 x 8'3 (4.27m x 2.52m)

Bedroom 2: 14'0 x 8'3 (4.27m x 2.52m)

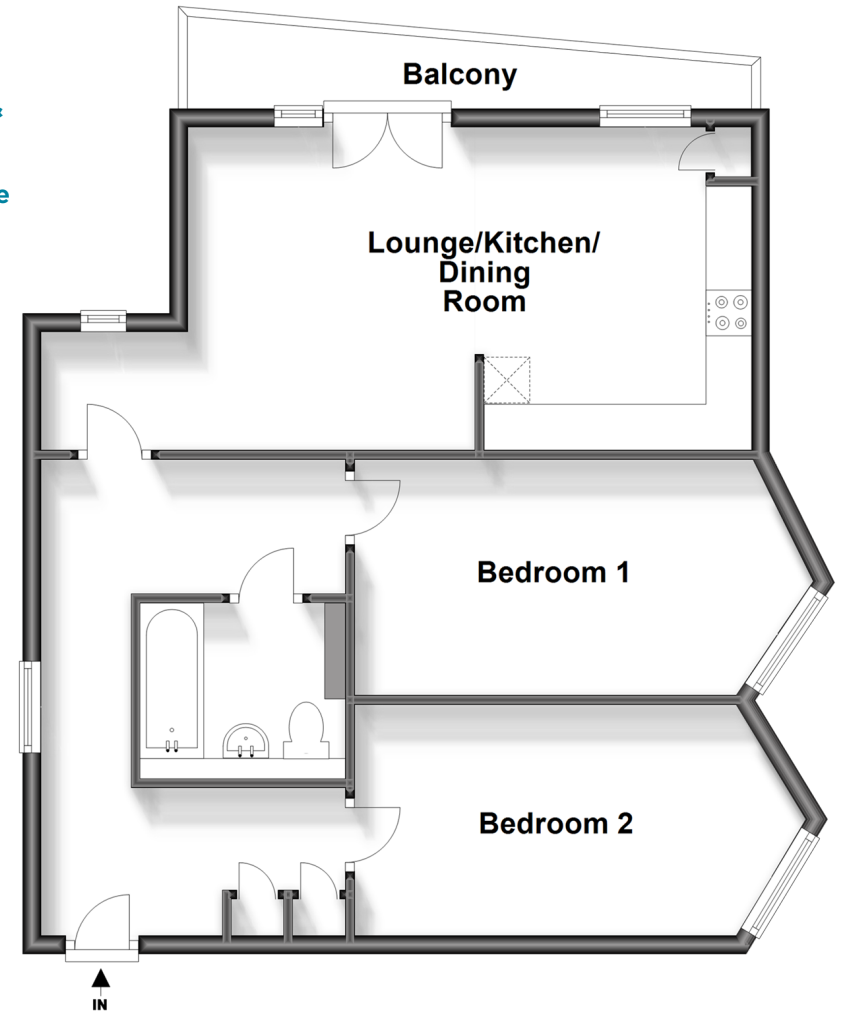
Bathroom

Balcony

OUTSIDE

Allocated Parking

Fourth Floor
Approx. 66.6 sq. metres (717.4 sq. feet)



Call Ilford - 020 8518 0044 ■ douglasallen.co.uk

- A private rental licensing scheme applies to some properties in this area, please contact us before proceeding
- Legal advice should be taken to verify fixtures/fittings, planning, alterations and/or lease details
- Appliances & services are untested, dimensions are approximate and floor plans are not to scale
- Through a Homewise Home For Life Plan people aged 60+ can secure this property for up to 59% less, by purchasing a Lifetime Lease.

