



Price
£450,000

Freehold

3x  1x  2x 

**Hampton Road, Ilford,
Essex, IG1**

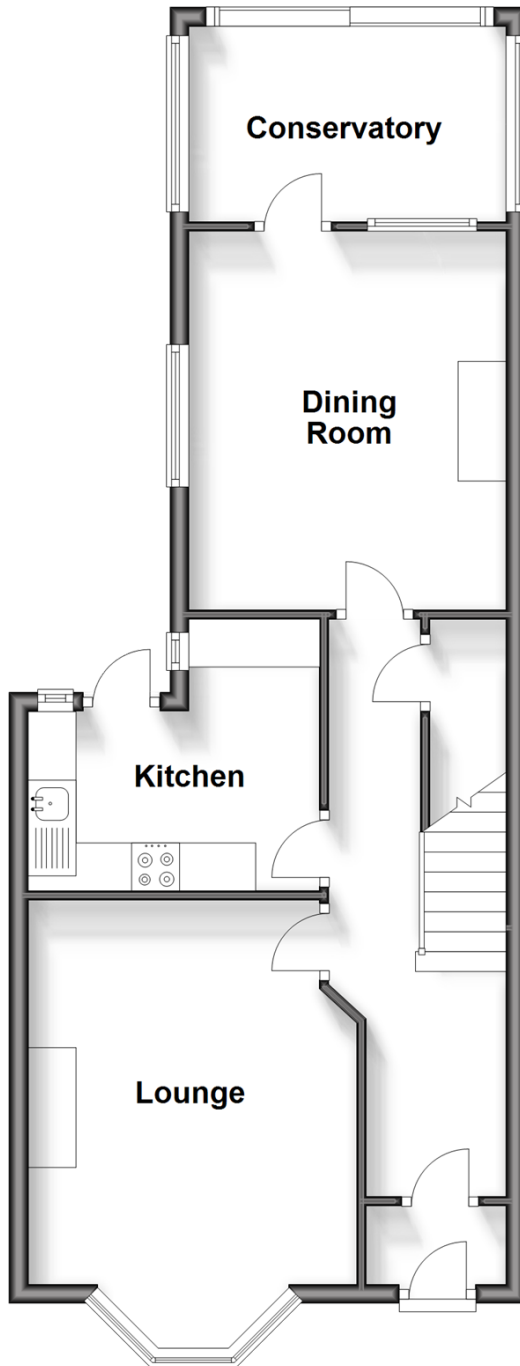
OVER 60?

Secure this property
for up to **59% less!**

 **DOUGLAS
ALLEN**
Helping you move forwards

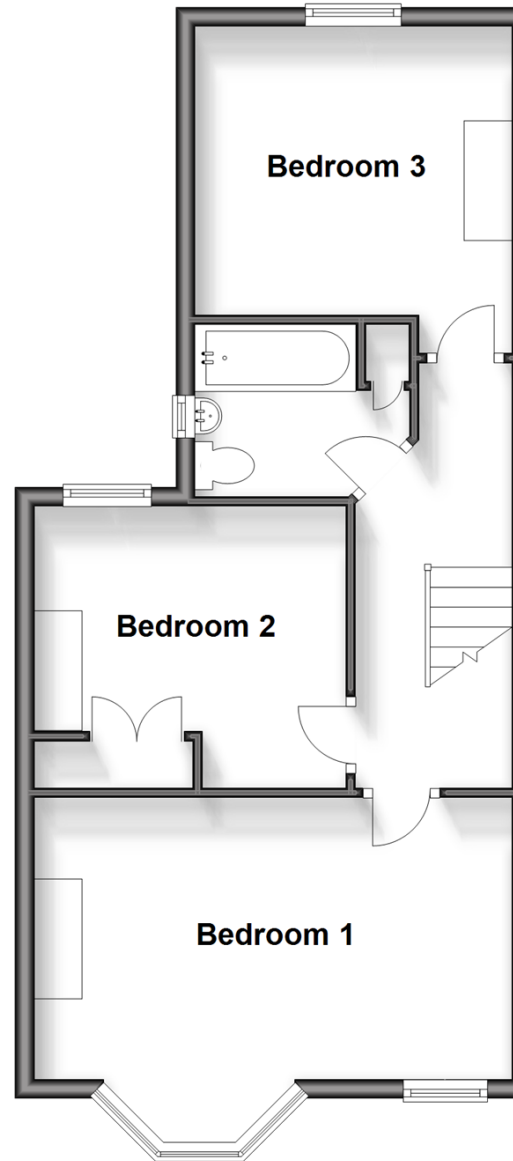
Ground Floor

Approx. 53.8 sq. metres (578.8 sq. feet)



Split Level First Floor

Approx. 46.7 sq. metres (502.6 sq. feet)



Accommodation

GROUND FLOOR

Entrance Porch

Entrance Hall

Lounge: 15'10 x 11'0 into bay (4.83m x 3.36m)

Dining Room: 13'0 x 11'0 (3.97m x 3.36m)

Kitchen: 11'0 x 9'0 (3.36m x 2.75m)

Conservatory: 11'0 x 7'0 (3.36m x 2.14m)

SPLIT-LEVEL FIRST FLOOR

Landing

Bedroom 1: 16'4 x 11'8 (4.98m x 3.56m)

Bedroom 2: 10'8 x 9'8 (3.25m x 2.95m)

Bedroom 3: 11'3 x 10'10 (3.43m x 3.30m)

Bathroom

OUTSIDE

Rear Garden

Off Street Parking



Main features

- Well maintained terraced house situated in the popular Redbridge Borough
- Spacious lounge area & conservatory
- Large rear garden, ideal for outdoor entertaining
- Walking distance to shops & places of worship
- Bus links to Ilford & Barking stations



Nearest Schools

Primary Schools: Cleveland Junior School 0.2 miles, Uphall Primary 0.3 miles, Woodlands Junior School 0.3 miles

Secondary Schools: Loxford School of Science and Technology 0.5 miles, Ilford Ursuline High School 0.8 miles



Transport Information

Train Stations: Ilford 0.5 miles, Barking 0.8 miles, Seven Kings 1.2 miles

Underground Barking 0.8 miles

DLR.: Beckton 2.6 miles



Address

Hampton Road, Ilford, Essex, IG1



Directions

For directions to this property please contact us.

