



Price

£180,000

Leasehold

1x  1x  1x 

**Mansfield Road, Ilford,
Essex, IG1**

OVER 60?

Secure this property
for up to **59% less!**

 **DOUGLAS
ALLEN**
Helping you move forwards



Main features

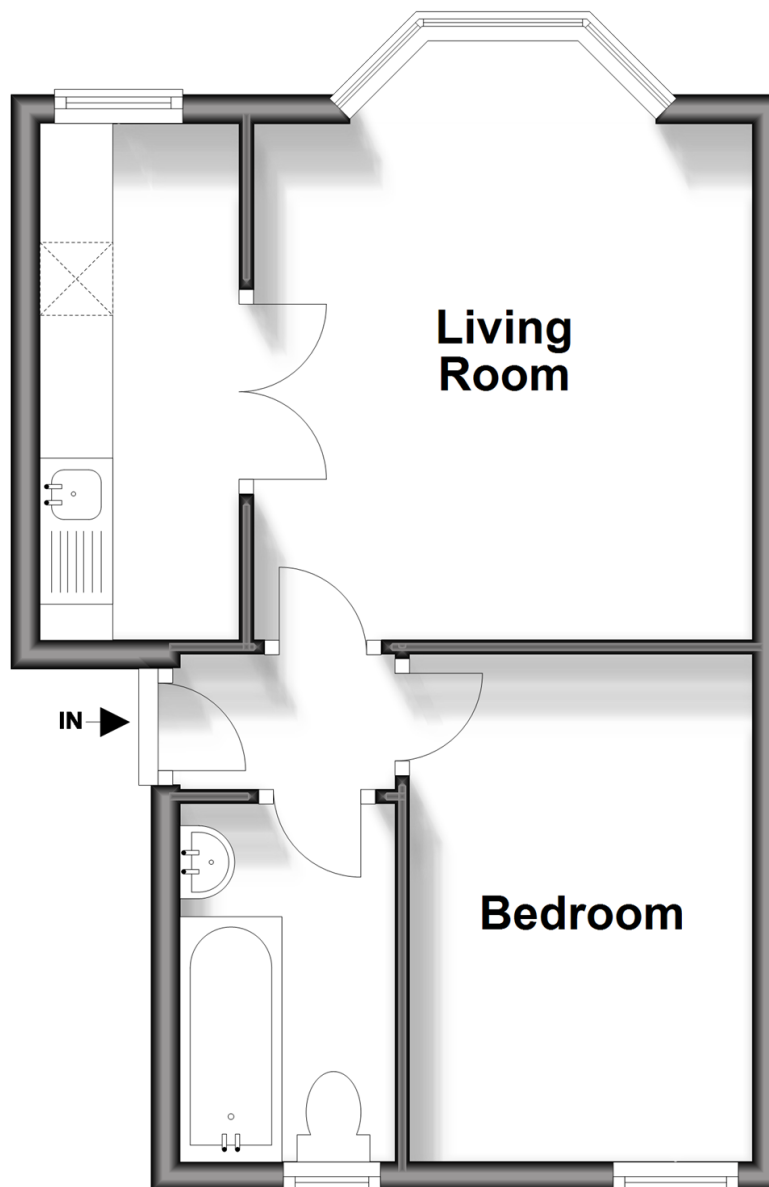
- Converted flat walking distance to Ilford station, great for commuting
- Ideal for buy-to-let investors
- Close to the Exchange Shopping Centre
- Allocated parking
- Chain Free & Long Lease

Call Ilford - 020 8518 0044 ■ douglasallen.co.uk

- A private rental licensing scheme applies to some properties in this area, please contact us before proceeding
- Appliances & services are untested, dimensions are approximate and floor plans are not to scale

First Floor

Approx. 31.7 sq. metres (340.9 sq. feet)



Accommodation

FIRST FLOOR

Entrance Hall

Living Room: 14'3 x 11'2 (4.35m x 3.41m)

Kitchen: 11'6 x 4'9 (3.51m x 1.45m)

Bedroom 1: 11'6 x 7'7 (3.51m x 2.31m)

Bathroom

OUTSIDE

Allocated Parking



52016684/20240217/CN/NK

- Legal advice should be taken to verify fixtures/fittings, planning, alterations and/or lease details
- Through a Homewise Home For Life Plan people aged 60+ can secure this property for up to 59% less, by purchasing a Lifetime Lease.