



OVER 60?

Secure this property
for up to **59% less!**

Price

£670,000

Freehold

4x  1x  2x 

**Ranelagh Gardens,
Ilford, Essex, IG1**

 **DOUGLAS
ALLEN**
Helping you move forwards



Main features

- Large end of terraced house situated in the Redbridge Borough
- Spacious living areas, ideal for any growing family
- Walking distance to Valentines Park & Exchange Shopping Centre
- Bus & road links to Ilford station & Gants Hill underground station

Accommodation

GROUND FLOOR

Entrance Hall

Lounge: 16'6 x 16'3 (5.03m x 4.96m)

Dining Room: 13'7 x 10'9 (4.14m x 3.28m)

Breakfast Room: 12'7 x 10'3 (3.84m x 3.13m)

Kitchen: 9'1 x 7'9 (2.77m x 2.36m)

Separate Toilet

FIRST FLOOR

Landing

Bedroom 1: 16'5 x 13'0 (5.01m x 3.97m)

Bedroom 2: 12'5 x 8'9 (3.79m x 2.67m)

Bedroom 3: 13'5 x 9'3 (4.09m x 2.82m)

Bedroom 4: 9'1 x 7'8 (2.77m x 2.34m)

Bathroom

OUTSIDE

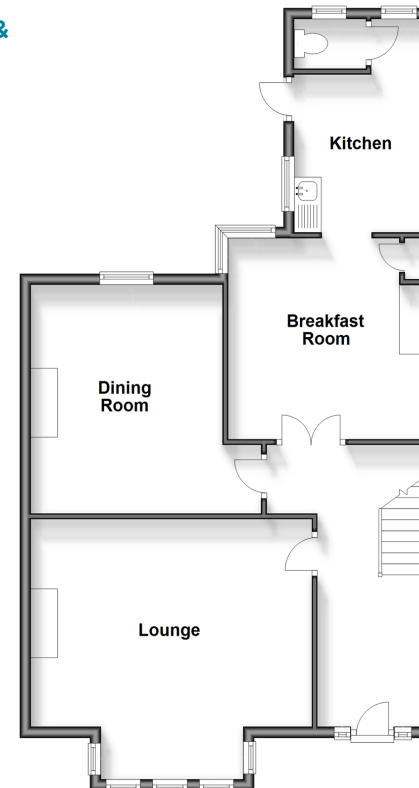
Rear Garden

Off Street Parking

Call Ilford - 020 8518 0044 ■ douglasallen.co.uk

- A private rental licensing scheme applies to some properties in this area, please contact us before proceeding
- Legal advice should be taken to verify fixtures/fittings, planning, alterations and/or lease details
- Appliances & services are untested, dimensions are approximate and floor plans are not to scale
- Through a Homewise Home For Life Plan people aged 60+ can secure this property for up to 59% less, by purchasing a Lifetime Lease.

Ground Floor
Approx. 74.5 sq. metres (801.9 sq. feet)



First Floor
Approx. 61.6 sq. metres (663.3 sq. feet)

