



**Price**

**£260,000**

**Leasehold**

2x  1x  1x 

**Mansfield Road, Ilford,  
Essex, IG1**





## Main features

- First floor converted flat within walking distance to Ilford station
- Allocated parking
- Fitted kitchen with lots of cupboard & worktop space
- Close to Exchange Shopping Centre
- Ideal for first time buyers

## Accommodation

### FIRST FLOOR

#### Entrance Hall

Lounge/Diner: 14'9 x 12'0 (4.50m x 3.66m)

Kitchen: 9'4 x 6'5 (2.85m x 1.96m)

Bedroom 1: 9'8 x 9'0 (2.95m x 2.75m)

Bedroom 2: 8'9 x 6'1 (2.67m x 1.86m)

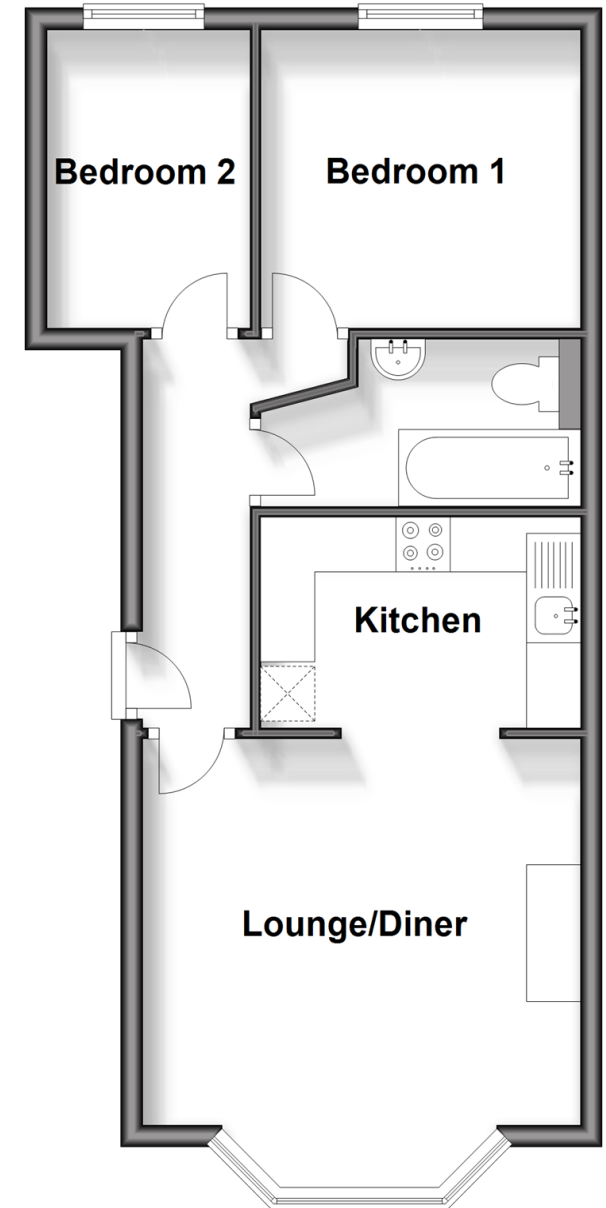
#### Bathroom

### OUTSIDE

Allocated Parking

## First Floor

Approx. 43.3 sq. metres (466.3 sq. feet)



**Call Ilford - 020 8518 0044 ■ [douglasallen.co.uk](http://douglasallen.co.uk)**

- A private rental licensing scheme applies to some properties in this area, please contact us before proceeding
- Legal advice should be taken to verify fixtures/fittings, planning, alterations and/or lease details
- Appliances & services are untested, dimensions are approximate and floor plans are not to scale



52016634/20240325/CN/NK