



OVER 60?

Secure this property
for up to **59% less!**

Price
£650,000

Freehold

4x  2x  2x 

**Dalkeith Road, Ilford,
Essex, IG1**

 **DOUGLAS
ALLEN**
Helping you move forwards



Main features

- 4 bedroom terraced house
- Off street parking for 2 cars
- Large rear garden with a summer house at the back
- Very well maintained
- Double Glazing
- Great family home would be suitable for a large family

Accommodation

GROUND FLOOR

Entrance
Hallway
Lounge: 14'8 x 14'1 (4.47m x 4.30m)
Sitting Area: 14'1 x 10'7 (4.30m x 3.23m)
Dining Area: 18'8 x 8'3 (5.69m x 2.52m)
Kitchen/Breakfast Room: 15'3 x 10'2 (4.65m x 3.10m)
Family Room: 17'2 x 10'2 (5.24m x 3.10m)
Shower Room

BASEMENT

Cellar

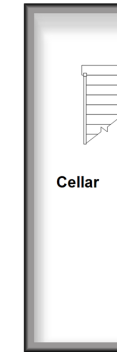
FIRST FLOOR

Landing
Bedroom 1: 14'4 x 11'0 (4.37m x 3.36m)
Bedroom 2: 14'2 x 10'11 (4.32m x 3.33m)
Bedroom 3: 10'5 x 9'5 (3.18m x 2.87m)
Bedroom 4: 8'8 x 8'0 (2.64m x 2.44m)
Bathroom

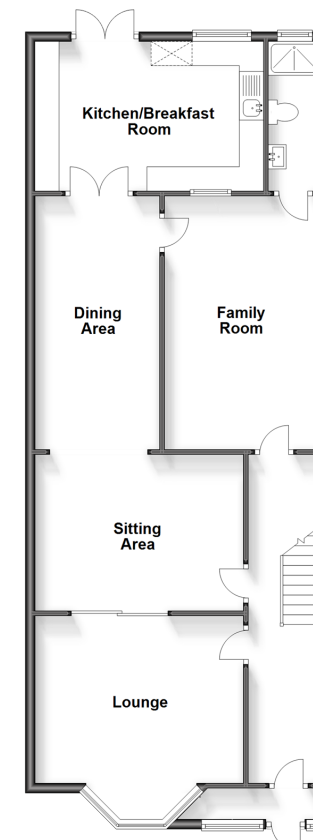
OUTSIDE

Off street parking
Rear Garden
Outbuilding

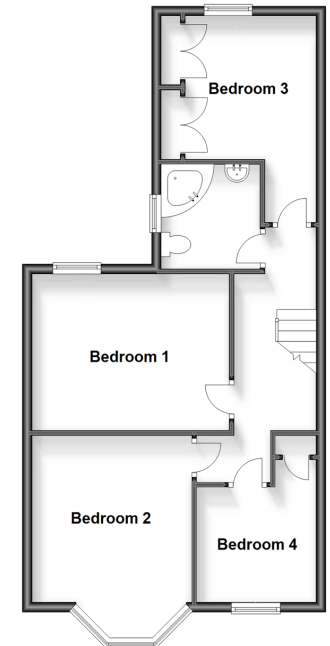
Basement
Approx. 12.5 sq. metres (135.0 sq. feet)



Ground Floor
Approx. 92.5 sq. metres (995.6 sq. feet)



First Floor
Approx. 57.5 sq. metres (618.9 sq. feet)



Call Ilford - 020 8518 0044 ■ douglasallen.co.uk

- A private rental licensing scheme applies to some properties in this area, please contact us before proceeding
- Legal advice should be taken to verify fixtures/fittings, planning, alterations and/or lease details
- Appliances & services are untested, dimensions are approximate and floor plans are not to scale
- Through a Homewise Home For Life Plan people aged 60+ can secure this property for up to 59% less, by purchasing a Lifetime Lease.



52016593/20230823/NK/JS