



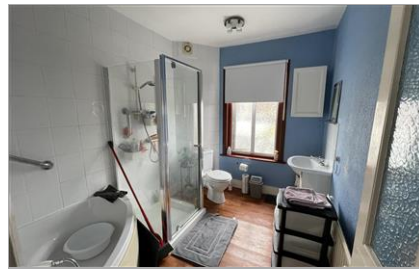
**Price**  
**£470,000**

**Freehold**

3x  2x  2x 

**Betchworth Road, Seven  
Kings, Ilford, Essex, IG3**





## Main features

- Mid terraced house situated in the London Borough of Redbridge
- Close by to local primary and secondary schools
- Short walk away from Seven Kings Station
- South Park sits next to South Park & its outdoor gym



### Nearest Schools

Primary Schools: South Park Primary 0.1 miles, SS Peter and Paul's Catholic Primary 0.3 miles, Mayespark Primary 0.5 miles

Secondary Schools: Canon Palmer Catholic School 0.5 miles, Loxford School of Science and Technology 0.6 miles, Seven Kings



### Transport Information

Train Stations: Seven Kings 0.4 miles, Goodmayes 0.9 miles, Ilford 1.0 miles  
Underground Newbury Park 1.2 miles, Gants Hill 1.8 miles, Barkingside 1.9 miles

**Call Ilford - 020 8518 0044 ■ [douglasallen.co.uk](http://douglasallen.co.uk)**

- A private rental licensing scheme applies to some properties in this area, please contact us before proceeding
- Appliances & services are untested, dimensions are approximate and floor plans are not to scale

## Accommodation

### GROUND FLOOR

Entrance Porch

Entrance Hall

Lounge: 15'9 x 13'4 (4.80m x 4.07m)

Dining Room: 12'9 x 10'4 (3.89m x 3.15m)

Kitchen: 9'1 x 6'9 (2.77m x 2.06m)

Lean-To: 13'9 x 7'2 (4.19m x 2.19m)

Cloakroom

### FIRST FLOOR

Landing

Bedroom 1: 13'9 x 9'3 (4.19m x 2.82m)

Bedroom 2: 13'7 x 8'7 (4.14m x 2.62m)

Bedroom 3: 12'9 x 7'1 (3.89m x 2.16m)

Bathroom

### OUTSIDE

Front and Rear Garden



52016503/20240427/CN/JS

- Legal advice should be taken to verify fixtures/fittings, planning, alterations and/or lease details