



OVER 60?

Secure this property
for up to **59% less!**

Price

£575,000

Freehold

3x  2x  2x 

**South Park Drive, Ilford,
Essex, IG3**



**DOUGLAS
ALLEN**

Helping you move forwards



Main features

- Large 3 bedroom terraced house
- Off street parking
- Extended to the rear
- Out Building which is used as office space
- Larger than average dooways
- Close to South Park and local amenities

Accommodation

GROUND FLOOR

Wet Room

Family Area: 13'2 x 10'7 (4.02m x 3.23m)

Kitchen/Dining Area: 18'5 x 15'8 (5.62m x 4.78m)

Bedroom 4/ Lounge: 11'2 x 10'9 (3.41m x 3.28m)

FIRST FLOOR

Bedroom 1: 13'2 x 10'4 (4.02m x 3.15m)

Bedroom 2: 11'6 x 9'1 (3.51m x 2.77m)

Bedroom 3: 10'2 x 8'6 (3.10m x 2.59m)

Bathroom

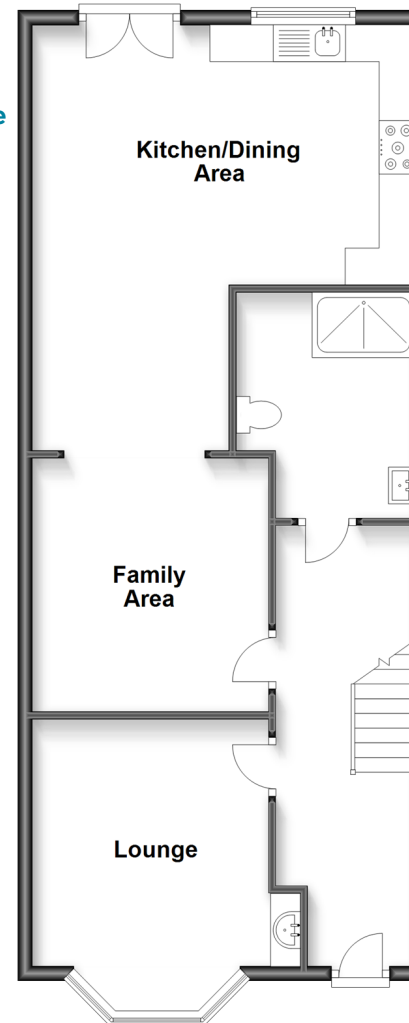
OUTSIDE

Out house: 12'3 x 10'3 (3.74m x 3.13m)

Off Street Parking

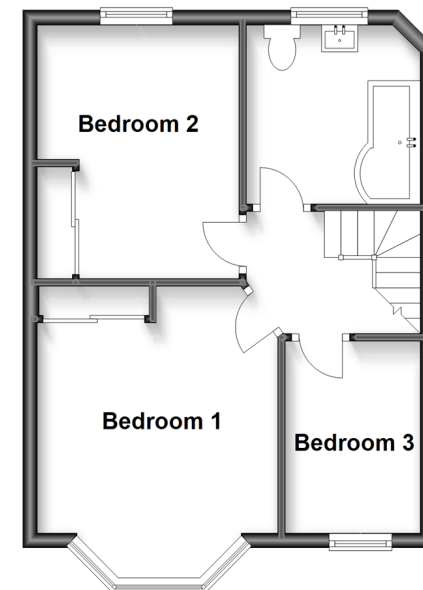
Ground Floor

Approx. 68.1 sq. metres (733.3 sq. feet)



First Floor

Approx. 36.9 sq. metres (397.0 sq. feet)



Call Ilford - 020 8518 0044 ■ douglasallen.co.uk

- A private rental licensing scheme applies to some properties in this area, please contact us before proceeding
- Legal advice should be taken to verify fixtures/fittings, planning, alterations and/or lease details
- Appliances & services are untested, dimensions are approximate and floor plans are not to scale
- Through a Homewise Home For Life Plan people aged 60+ can secure this property for up to 59% less, by purchasing a Lifetime Lease.



52016484/20230615/LA/JS