



Price
£600,000

Freehold

5x  2x  2x 

**Puffin Close, Barking,
Essex, IG11**

OVER 60?

Secure this property
for up to **59% less!**



Video Tour available



**DOUGLAS
ALLEN**

Helping you move forwards



Main features

- 5 bedroom end of terraced house
- Off street parking for multiple vehicles
- Close to Riverside Station and Uber Clipper
- Ideal for a large family or for an investment.
- Minutes away from the A13

Accommodation

GROUND FLOOR

Lounge/Diner: 25'2 x 16'6 (7.68m x 5.03m)
 Kitchen: 10'5 x 8'5 (3.18m x 2.57m)
 Cloakroom

FIRST FLOOR

Bedroom 3: 14'5 x 8'8 (4.40m x 2.64m)
 Bedroom 4: 10'8 x 9'8 (3.25m x 2.95m)
 Bedroom 5: 7'9 x 6'8 (2.36m x 2.03m)
 Main Bathroom

SECOND FLOOR

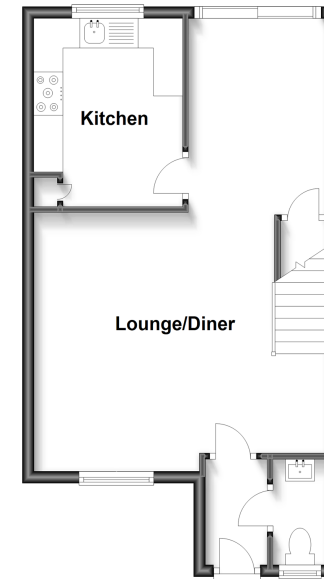
Bedroom 2: 10'8 x 9'7 (3.25m x 2.92m)
 Bedroom 1: 12'1 x 10'7 (3.69m x 3.23m)
 Bathroom

OUTSIDE

Rear Garden
 Off street parking x 3

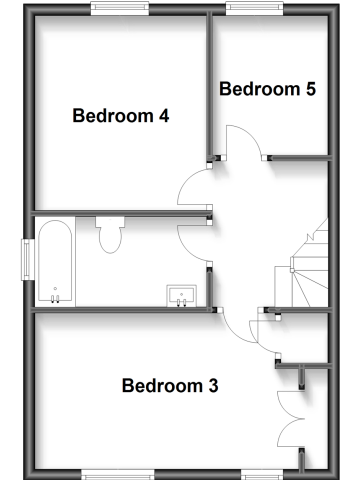
Ground Floor

Approx. 41.7 sq. metres (448.5 sq. feet)



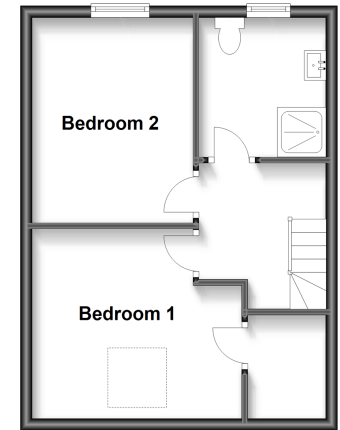
First Floor

Approx. 38.4 sq. metres (413.1 sq. feet)



Second Floor

Approx. 33.9 sq. metres (365.3 sq. feet)



Call Ilford - 020 8518 0044 ■ douglasallen.co.uk

- A private rental licensing scheme applies to some properties in this area, please contact us before proceeding
- Legal advice should be taken to verify fixtures/fittings, planning, alterations and/or lease details
- Appliances & services are untested, dimensions are approximate and floor plans are not to scale
- Through a Homewise Home For Life Plan people aged 60+ can secure this property for up to 59% less, by purchasing a Lifetime Lease.



52016474/20230816/NK/JS