



**Price**  
**£625,000**

**Freehold**

3x  1x  2x 

**The Drive, Ilford, Essex,  
IG1**



**Video Tour available**



**DOUGLAS  
ALLEN**

Helping you move forwards





## Main features

- 3 bedroom mid terraced house located in North Ilford
- On The Drive
- Close to A12 and Redbridge Station
- Minutes away from Town centre and Valentines Park
- Great location for transport links
- Would suit a family

## Accommodation

### GROUND FLOOR

Porch Entrance  
Hallway  
Lounge/Diner: 12'4 x 11'8 (3.76m x 3.56m)  
Utility Room  
Kitchen/Breakfast Area: 17'4 x 12'3 (5.29m x 3.74m)

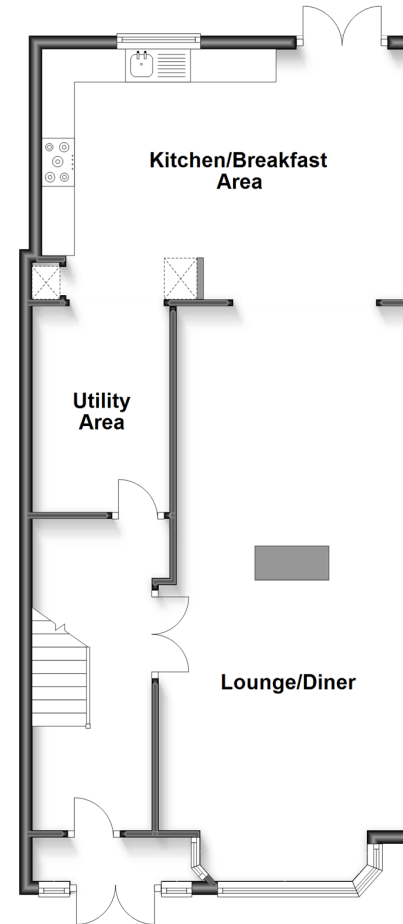
### FIRST FLOOR

Bedroom 1: 16'4 x 12'7 (4.98m x 3.84m)  
Bedroom 2: 13'0 x 9'3 (3.97m x 2.82m)  
Bedroom 3: 12'6 x 9'6 (3.81m x 2.90m)  
Bathroom

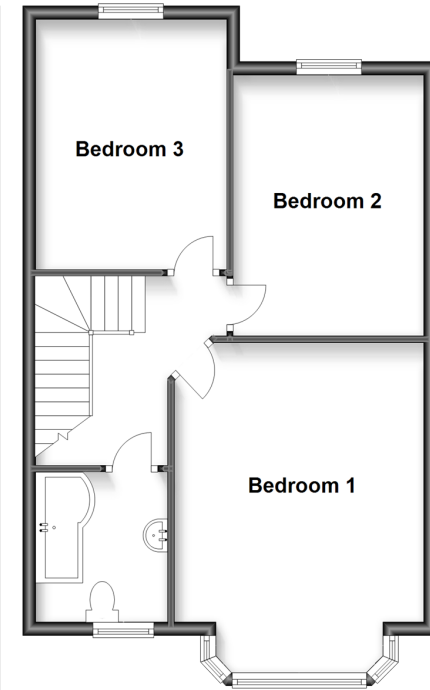
### OUTSIDE

Driveway  
Rear Garden  
Garage: 18'5 x 9'2 (5.62m x 2.80m)

**Ground Floor**  
Approx. 72.0 sq. metres (775.3 sq. feet)



**First Floor**  
Approx. 53.9 sq. metres (580.0 sq. feet)



**Call Ilford - 020 8518 0044 ■ [douglasallen.co.uk](http://douglasallen.co.uk)**

- A private rental licensing scheme applies to some properties in this area, please contact us before proceeding
- Legal advice should be taken to verify fixtures/fittings, planning, alterations and/or lease details
- Appliances & services are untested, dimensions are approximate and floor plans are not to scale



52016461/20230306/AS/JS