



**Price**

**£315,000**

**Leasehold**

2x  1x  1x 

**The Drive, Ilford, Essex,  
IG1**

**OVER 60?**

Secure this property  
for up to **59% less!**



**Video Tour available**



**DOUGLAS  
ALLEN**

Helping you move forwards





## Main features

- 2 bedroom split level maisonette situated in North Ilford
- Private garden
- Close to the centre of Ilford and many local amenities
- Walking distance to Redbridge station and Valentines Park
- Great location for transport services

## Accommodation

### GROUND FLOOR

Entrance  
Hallway  
Kitchen: 7'4 x 6'9 (2.24m x 2.06m)  
Living Room: 14'7 x 14'1 (4.45m x 4.30m)

### FIRST FLOOR

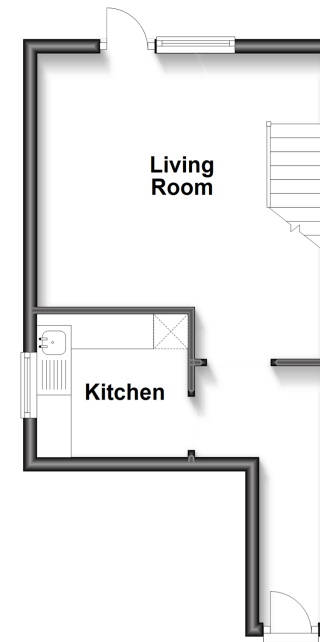
Bedroom 1: 12'0 x 11'0 (3.66m x 3.36m)  
Bedroom 2: 11'5 x 6'3 (3.48m x 1.91m)  
Bathroom

### OUTSIDE

Rear Garden

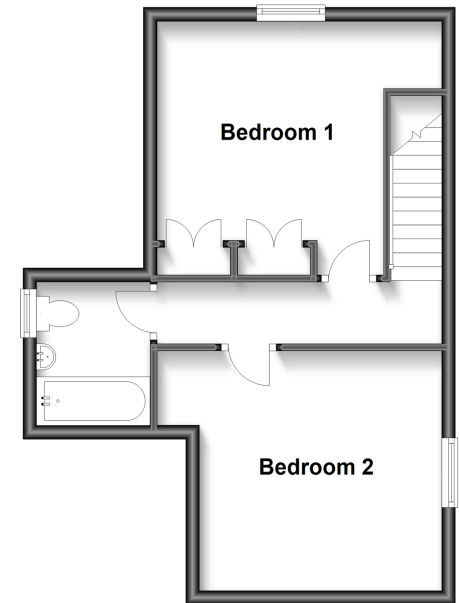
### Ground Floor

Approx. 26.3 sq. metres (283.3 sq. feet)



### First Floor

Approx. 36.2 sq. metres (389.4 sq. feet)



**Call Ilford - 020 8518 0044 ■ [douglasallen.co.uk](http://douglasallen.co.uk)**

- A private rental licensing scheme applies to some properties in this area, please contact us before proceeding
- Legal advice should be taken to verify fixtures/fittings, planning, alterations and/or lease details
- Appliances & services are untested, dimensions are approximate and floor plans are not to scale
- Through a Homewise Home For Life Plan people aged 60+ can secure this property for up to 59% less, by purchasing a Lifetime Lease.



52016445/20240113/CN/JS