



**Price**  
**£450,000**

**Freehold**

3x  1x  2x 

**Henley Road, Ilford,  
Essex, IG1**

**OVER 60?**

Secure this property  
for up to **59% less!**



**Video Tour available**



**DOUGLAS  
ALLEN**

Helping you move forwards





## Main features

- **3 Bedroom terraced house located in South Ilford**
- **Walking distance to Ilford Town Centre**
- **Situated near Ilford Lane**
- **Large rear garden and driveway for off street parking**
- **2 reception rooms and a ground floor bathroom.**

## Accommodation

### GROUND FLOOR

Lounge: 13'3 x 11'8 (4.04m x 3.56m)  
 Dining Room: 12'0 x 10'9 (3.66m x 3.28m)  
 Kitchen: 9'2 x 7'3 (2.80m x 2.21m)  
 Bathroom

### FIRST FLOOR

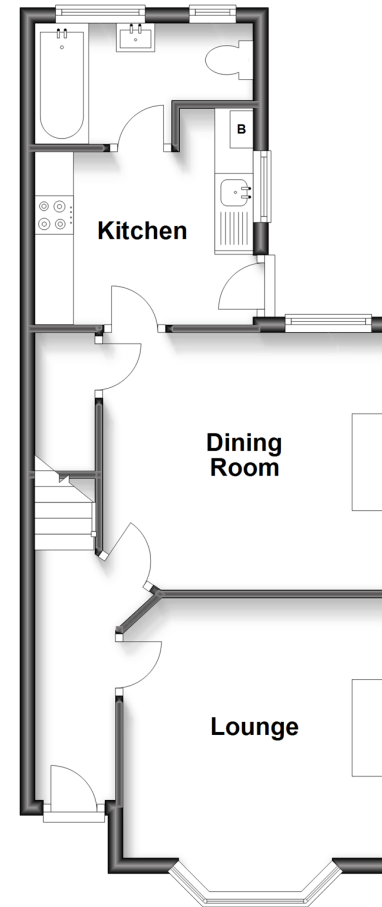
Bedroom 1: 15'1 x 12'9 (4.60m x 3.89m)  
 Bedroom 2: 11'8 x 9'6 (3.56m x 2.90m)  
 Bedroom 3: 9'7 x 9'3 (2.92m x 2.82m)

### OUTSIDE

Driveway  
 Rear Garden

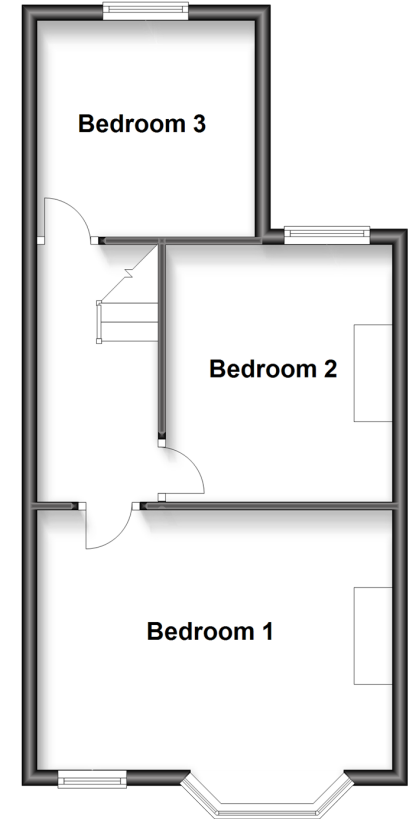
### Ground Floor

Approx. 42.2 sq. metres (453.9 sq. feet)



### Split Level First Floor

Approx. 39.9 sq. metres (429.6 sq. feet)



**Call Ilford - 020 8518 0044 ■ [douglasallen.co.uk](http://douglasallen.co.uk)**

- A private rental licensing scheme applies to some properties in this area, please contact us before proceeding
- Legal advice should be taken to verify fixtures/fittings, planning, alterations and/or lease details
- Appliances & services are untested, dimensions are approximate and floor plans are not to scale
- Through a Homewise Home For Life Plan people aged 60+ can secure this property for up to 59% less, by purchasing a Lifetime Lease.



52016438/20231118/CN/JS