



Price
£285,000

Leasehold

2x  1x  1x 

**Payne Close, Barking,
Essex, IG11**

OVER 60?

You could get up to
59% off the price!*



Video Tour available



**DOUGLAS
ALLEN**

Helping you move forwards



Main features

- 2 bedroom purpose built apartment
- Main bedroom has en suite as well as a family bathroom
- Minutes away from Upney Station and A13
- Allocated Parking
- Ideal for a first time buyer or a buy to let investor

Accommodation

SECOND FLOOR

Lounge/Diner: 18'3 x 12'4 (5.57m x 3.76m)

Kitchen: 12'2 x 8'8 (3.71m x 2.64m)

Bedroom 1/En suite: 11'4 x 10'8 (3.46m x 3.25m)

Bedroom 2: 12'1 x 7'9 (3.69m x 2.36m)

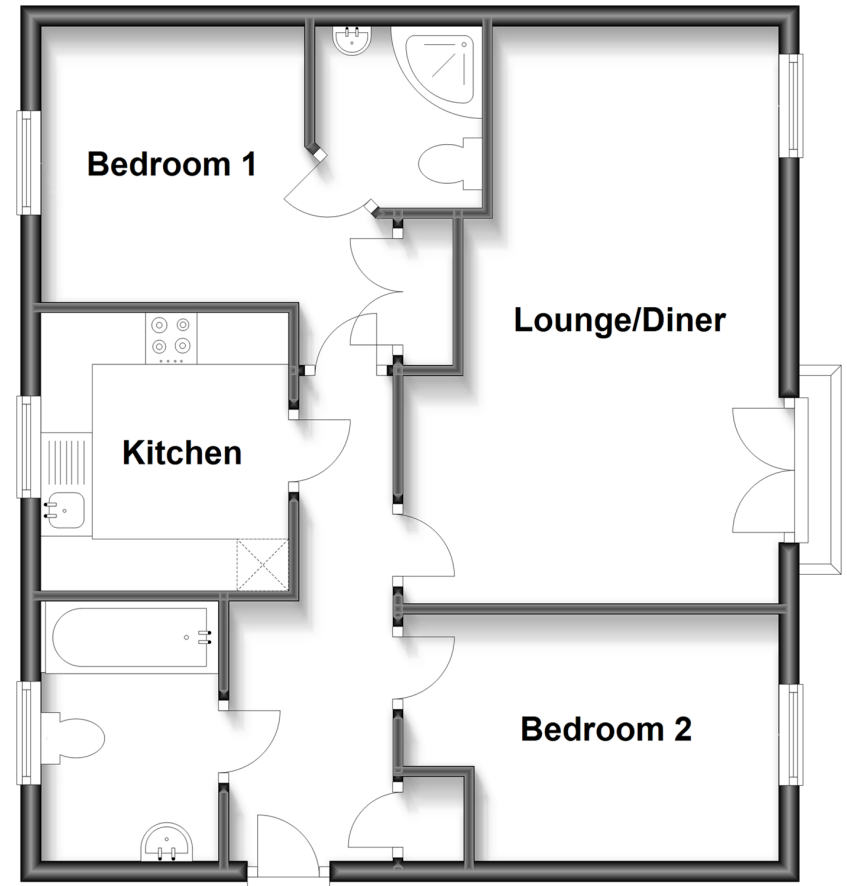
Family Bathroom

OUTSIDE

Allocated Parking

Second Floor

Approx. 57.9 sq. metres (623.0 sq. feet)



Call Ilford - 020 8518 0044 ■ douglasallen.co.uk

- A private rental licensing scheme applies to some properties in this area, please contact us before proceeding
- Legal advice should be taken to verify fixtures/fittings, planning, alterations and/or lease details
- Appliances & services are untested, dimensions are approximate and floor plans are not to scale
- Our Homewise partnership offer a 'Home for Life' plan to buyers over 60, granting a lifetime lease for your protection and reducing the purchase price by up to 59%



52016358/20221105/AS/JS