



Guide Price
£250,000

Leasehold

2x  1x  1x 

Bradfield Drive, Barking,
Essex, IG11

OVER 60?

Secure this property
for up to **59% less!**



Video Tour available



**DOUGLAS
ALLEN**

Helping you move forwards



Main features

- 2 bedroom first floor purpose built flat
- Within walking distance of Barking Abbey School
- A wonderful investment opportunity or first time purchase
- Accessible to shops, transport links and local amenities

Accommodation

FIRST FLOOR

Entrance Hall

Lounge/Diner: 15'9 x 10'5 (4.80m x 3.18m)

Kitchen: 9'8 x 7'6 (2.95m x 2.29m)

Bedroom 1: 12'9 x 9'9 (3.89m x 2.97m)

Bedroom 2: 10'4 x 10'2 (3.15m x 3.10m)

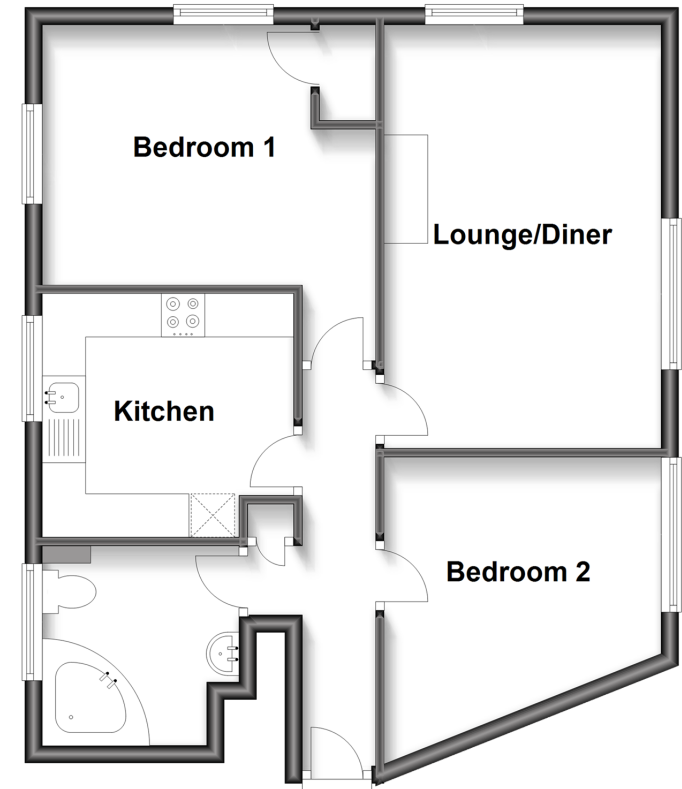
Bathroom

OUTSIDE

Private Garden

First Floor

Approx. 56.8 sq. metres (610.9 sq. feet)



Call Ilford - 020 8518 0044 ■ douglasallen.co.uk

- A private rental licensing scheme applies to some properties in this area, please contact us before proceeding
- Legal advice should be taken to verify fixtures/fittings, planning, alterations and/or lease details
- Appliances & services are untested, dimensions are approximate and floor plans are not to scale
- Through a Homewise Home For Life Plan people aged 60+ can secure this property for up to 59% less, by purchasing a Lifetime Lease.



52016311/20240116/MH/MG4