



Price

£830,000

Freehold

4x  2x  2x 

**Seymour Gardens,
Ilford, Essex, IG1**

OVER 60?

Secure this property
for up to **59% less!**



Video Tour available



**DOUGLAS
ALLEN**

Helping you move forwards



Main features

- 4 Bedroom mid terraced house
- Located in North Ilford
- Off street parking for 2 vehicles
- Has been extended to the rear of the property
- Close to many local shopping facilities
- Would make an amazing family home for a large family.

Accommodation

GROUND FLOOR

Lounge: 26'3 x 12'5 (8.01m x 3.79m)
 Sitting Room: 17'1 x 12'4 (5.21m x 3.76m)
 Kitchen/Dining Area: 24'1 x 12'4 (7.35m x 3.76m)
 Study: 24'1 x 12'4 (7.35m x 3.76m)
 Shower Room: 12'7 x 2'8 (3.84m x 0.81m)

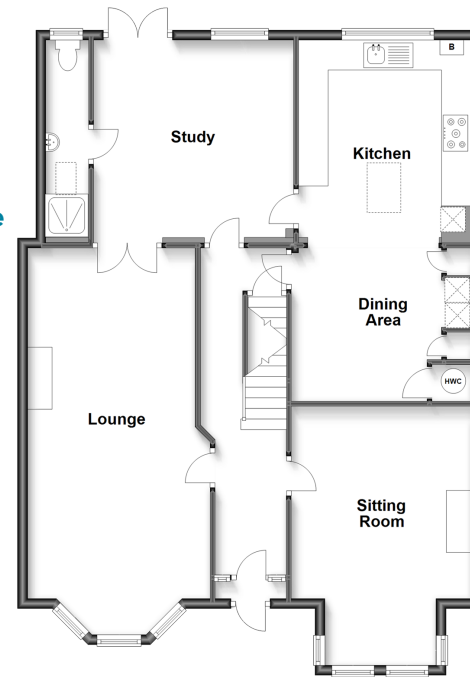
FIRST FLOOR

Bedroom 1: 16'7 x 15'6 (5.06m x 4.73m)
 Bedroom 2: 11'8 x 11'1 (3.56m x 3.38m)
 Bedroom 3: 16'4 x 12'7 (4.98m x 3.84m)
 Bedroom 4: 11'1 x 7'3 (3.38m x 2.21m)
 Bathroom

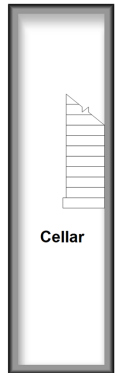
OUTSIDE

Off Street Parking x 2
 Rear Garden

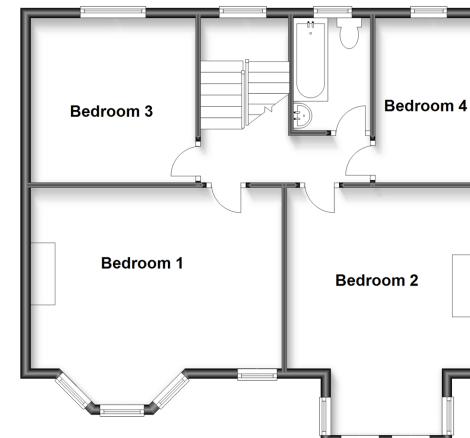
Ground Floor
 Approx. 104.1 sq. metres (1120.6 sq. feet)



Basement
 Approx. 12.4 sq. metres (133.3 sq. feet)



First Floor
 Approx. 68.3 sq. metres (734.7 sq. feet)



Call Ilford - 020 8518 0044 ■ douglasallen.co.uk

- A private rental licensing scheme applies to some properties in this area, please contact us before proceeding
- Legal advice should be taken to verify fixtures/fittings, planning, alterations and/or lease details
- Appliances & services are untested, dimensions are approximate and floor plans are not to scale
- Through a Homewise Home For Life Plan people aged 60+ can secure this property for up to 59% less, by purchasing a Lifetime Lease.



52016203/20230510/NK/JS