



OVER 60?

Secure this property
for up to **59% less!**

Price

£750,000

Freehold

4x  1x  2x 

**Coventry Road, Ilford,
Essex, IG1**

 **DOUGLAS
ALLEN**
Helping you move forwards



Main features

- 4 bedroom end of terrace house
- Off street parking for 2 cars and rear garden
- Loft conversion with en suite
- Ground floor shower room and first floor bathroom
- Very spacious
- Ideal for a large family

Accommodation

GROUND FLOOR

Lounge: 16'5 x 13'5 (5.01m x 4.09m)
 Dining Area: 13'4 x 12'3 (4.07m x 3.74m)
 Kitchen/Breakfast Room: 20'9 x 15'5 (6.33m x 4.70m)
 Ground floor shower room
 Conservatory: 17'1 x 11'1 (5.21m x 3.38m)

FIRST FLOOR

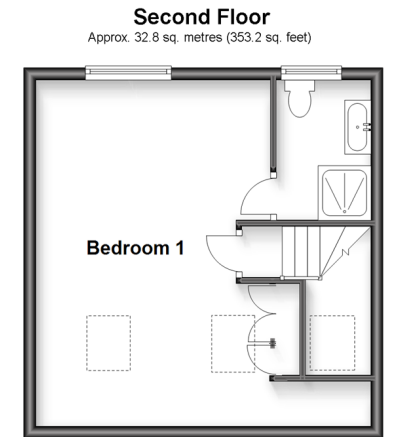
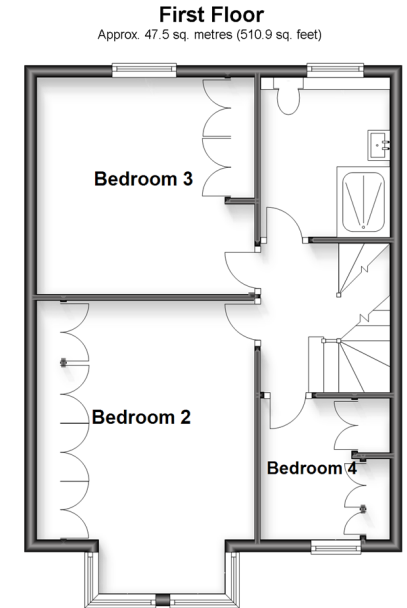
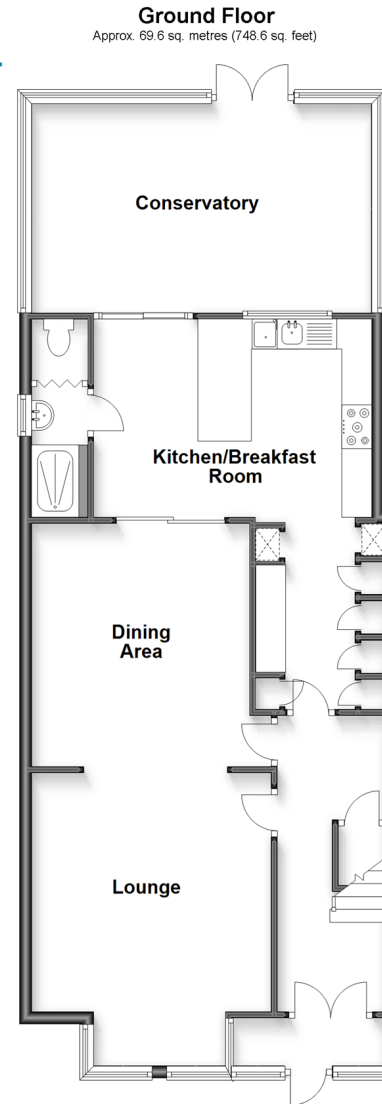
Bedroom 2: 16'1 x 10'1 (4.91m x 3.08m)
 Bedroom 3: 12'9 x 12'1 (3.89m x 3.69m)
 Bedroom 4: 7'8 x 7'3 (2.34m x 2.21m)
 Bathroom

SECOND FLOOR

Bedroom 1: 18'9 x 13'3 (5.72m x 4.04m)
 En suite
 Storage

OUTSIDE

Rear Garden
 Driveway x 2 cars



Call Ilford - 020 8518 0044 ■ douglasallen.co.uk

- A private rental licensing scheme applies to some properties in this area, please contact us before proceeding
- Legal advice should be taken to verify fixtures/fittings, planning, alterations and/or lease details
- Appliances & services are untested, dimensions are approximate and floor plans are not to scale
- Through a Homewise Home For Life Plan people aged 60+ can secure this property for up to 59% less, by purchasing a Lifetime Lease.