



**Price**  
**£575,000**

**Freehold**

4x  2x  2x 

**Dalkeith Road, Ilford,  
Essex, IG1**





## Main features

- **Spacious Mid Terrace house located in South Ilford**
- **Off Street Parking for 2 cars**
- **Has a loft conversion with a shower room**
- **Kitchen has been extended leading out to a large garden**
- **Close to the centre of Ilford allowing access to local transport links**

## Accommodation

### GROUND FLOOR

Entrance Porch  
Hallway  
Lounge : 15'6 x 14'3 (4.73m x 4.35m)  
Dining Room: 12'6 x 12'2 (3.81m x 3.71m)  
Kitchen: 18'7 x 18'7 (5.67m x 5.67m)

### FIRST FLOOR

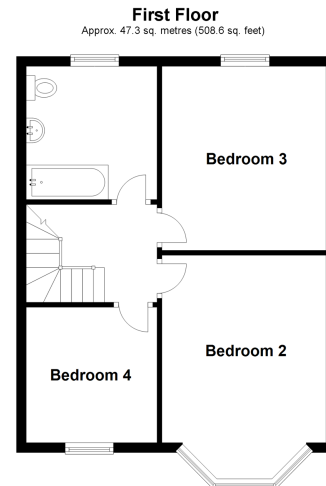
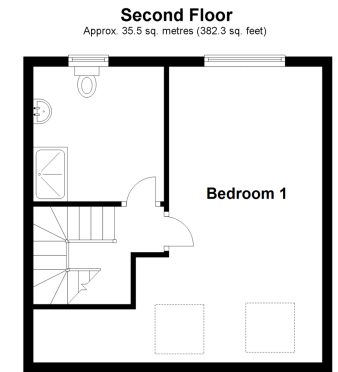
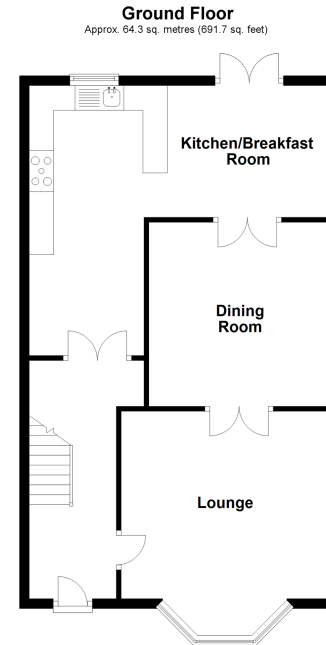
Landing  
Bedroom 2: 15'5 x 9'1 (4.70m x 2.77m)  
Bedroom 3: 12'4 x 11'4 (3.76m x 3.46m)  
Bedroom 4: 9'4 x 8'3 (2.85m x 2.52m)  
Bathroom

### SECOND FLOOR

Landing  
Bedroom 1: 19'7 x 13'2 (5.97m x 4.02m)  
Shower Room

### OUTSIDE

Rear Garden  
Off Street Parking



**Call Ilford - 020 8518 0044 ■ [douglasallen.co.uk](http://douglasallen.co.uk)**

- A private rental licensing scheme applies to some properties in this area, please contact us before proceeding
- Legal advice should be taken to verify fixtures/fitings, planning, alterations and/or lease details
- Appliances & services are untested, dimensions are approximate and floor plans are not to scale



52015092/20231101/TF/TF