



Price
£450,000

Freehold

3x  1x  2x 

**Roman Road, Ilford,
Essex, IG1**

OVER 60?

Secure this property
for up to **59% less!**



Video Tour available



**DOUGLAS
ALLEN**

Helping you move forwards



Main features

- 3 bedroom extended terraced house with conservatory
- With 2 receptions & modern fitted kitchen
- South facing rear garden
- Close to Barking Station and Ilford Crossrail
- Walking distance to Barking and Loxford Park

Accommodation

GROUND FLOOR

Hallway

Lounge: 11'4 x 11'0 (3.46m x 3.36m)

Dining Room: 15'0 x 9'6 (4.58m x 2.90m)

Kitchen: 12'4 x 8'7 (3.76m x 2.62m)

FIRST FLOOR

Landing

Bedroom 1: 15'1 x 8'9 (4.60m x 2.67m)

Bedroom 2: 9'6 x 7'6 (2.90m x 2.29m)

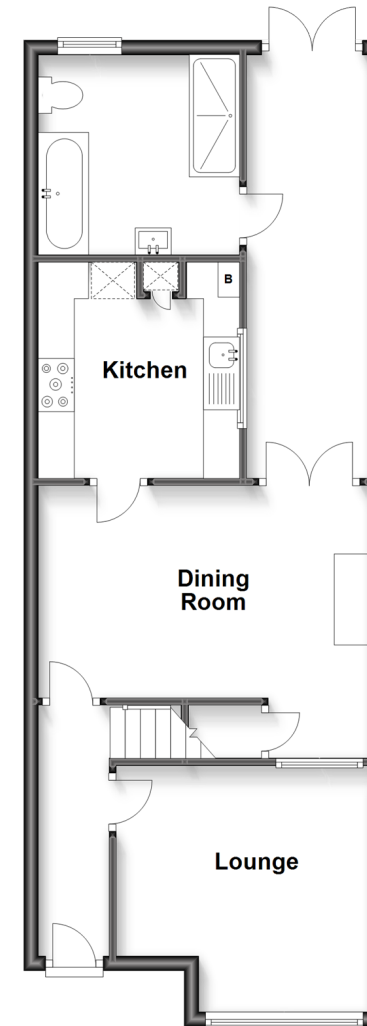
Bedroom 3: 7'2 x 6'10 (2.19m x 2.08m)

OUTSIDE

Garden

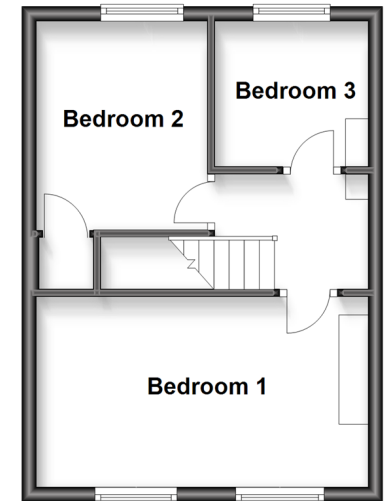
Ground Floor

Approx. 58.9 sq. metres (633.9 sq. feet)



First Floor

Approx. 29.5 sq. metres (317.5 sq. feet)



Call Ilford - 020 8518 0044 ■ douglasallen.co.uk

- A private rental licensing scheme applies to some properties in this area, please contact us before proceeding
- Legal advice should be taken to verify fixtures/fittings, planning, alterations and/or lease details
- Appliances & services are untested, dimensions are approximate and floor plans are not to scale
- Through a Homewise Home For Life Plan people aged 60+ can secure this property for up to 59% less, by purchasing a Lifetime Lease.



52010685/20230715/LA/JS