



Price

£225,000

Leasehold

1x  1x  1x 

**Ley Street, Ilford, Essex,
IG2**

OVER 60?

Secure this property
for up to **59% less!**



Video Tour available



**DOUGLAS
ALLEN**

Helping you move forwards



Main features

- First floor one bedroom flat
- Separate kitchen and lounge area
- Seven Kings High school catchment area
- Close to many shopping facilities and transport services
- Local schools and parks nearby ideal for a family

Accommodation

FIRST FLOOR

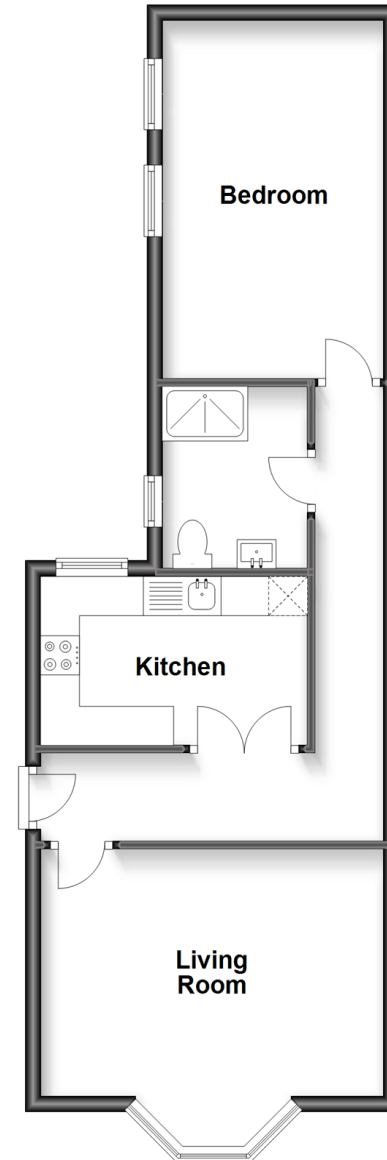
Kitchen: 11'3 x 6'8 (3.43m x 2.03m)

Bedroom 1: 13'0 x 9'4 (3.97m x 2.85m)

Living Room: 14'2 x 13'9 (4.32m x 4.19m)

First Floor

Approx. 49.7 sq. metres (535.4 sq. feet)



Call Ilford - 020 8518 0044 ■ douglasallen.co.uk

- A private rental licensing scheme applies to some properties in this area, please contact us before proceeding
- Legal advice should be taken to verify fixtures/fittings, planning, alterations and/or lease details
- Appliances & services are untested, dimensions are approximate and floor plans are not to scale
- Through a Homewise Home For Life Plan people aged 60+ can secure this property for up to 59% less, by purchasing a Lifetime Lease.



52003880/20230613/SAM/JS