



Price
£500,000

Freehold

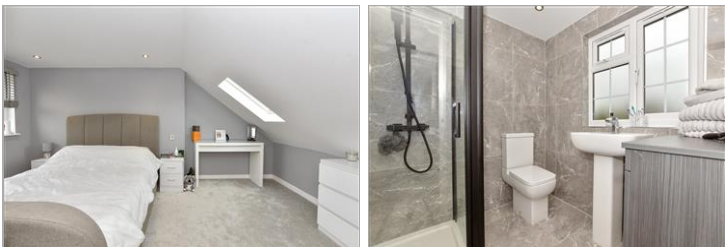
3x  2x  1x 

**Mungo Park Road,
Rainham, Essex, RM13**

OVER 60?

Secure this property
for up to **59% less!**

 **DOUGLAS
ALLEN**
Helping you move forwards

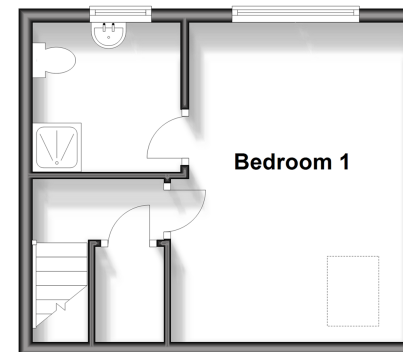


Main features

- End of terraced family home extended into the loft
- En-suite to Bedroom 1
- Outbuilding
- Off road parking
- Situated less than a mile to Elm Park Station & amenities

Second Floor

Approx. 24.5 sq. metres (263.9 sq. feet)



Accommodation

GROUND FLOOR

Porch
Hallway
Lounge/Dining Room: 21'6 (6.56m) x 11'5 (3.48m) narrowing to 8'6 (2.59m)
Kitchen: 9'2 x 8'8 (2.80m x 2.64m)

FIRST FLOOR

Landing
Bedroom 2: 11'5 x 8'2 (3.48m x 2.49m)
Bedroom 3: 9'7 x 9'7 (2.92m x 2.92m)
Shower Room

SECOND FLOOR

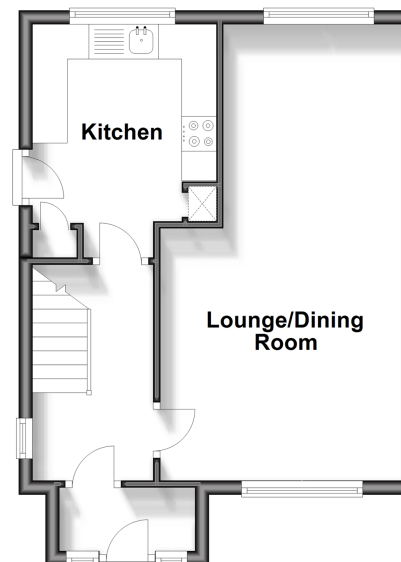
Landing
Bedroom 1: 15'3 x 9'7 (4.65m x 2.92m)
En-Suite

OUTSIDE

Off Road Parking
Rear Garden
Out Building: 9'2 x 8'8 (2.80m x 2.64m) plus 7'9 x 8'8 (2.36m x 2.64m)

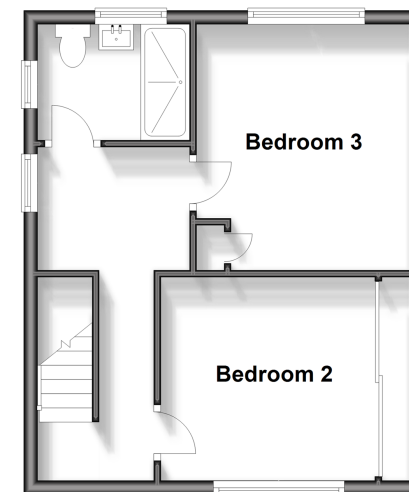
Ground Floor

Approx. 37.0 sq. metres (398.5 sq. feet)



First Floor

Approx. 35.1 sq. metres (377.3 sq. feet)



Call Hornchurch - 01708 437777 ■ douglasallen.co.uk

- A private rental licensing scheme applies to some properties in this area, please contact us before proceeding
- Legal advice should be taken to verify fixtures/fittings, planning, alterations and/or lease details
- Appliances & services are untested, dimensions are approximate and floor plans are not to scale
- Through a Homewise Home For Life Plan people aged 60+ can secure this property for up to 59% less, by purchasing a Lifetime Lease.



51916066/20240504/CC1/DT