



Price

£335,000

Leasehold

2x  1x  1x 

**Blueberry Court,
Holmeoak Avenue,
Rainham, Essex, RM13**

 **DOUGLAS
ALLEN**
Helping you move forwards



Main features

- **£150,750 for 45% shared ownership with 120 lease remaining**
- **£1570 annual service charge and £300 annual ground rent**
- **Secure underground parking space**
- **Modern and bright accommodation with a 28' balcony**
- **Close to schools, station, amenities and road links**

Accommodation

SECOND FLOOR

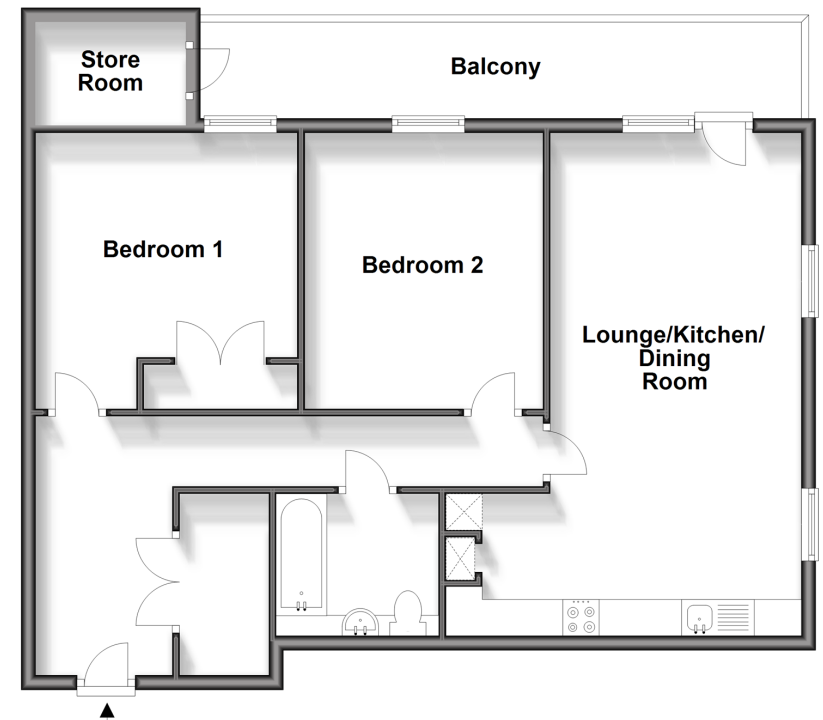
Hallway
Storage Cupboard
Bedroom 1: 12'4 x 11'6 (3.76m x 3.51m)
Bedroom 2: 12'5 x 10'5 (3.79m x 3.18m)
Bathroom: 7'4 x 6'4 (2.24m x 1.93m)
Lounge/Kitchen/Dining Room: 16'7 x 11'3 (5.06m x 3.43m) plus 14'4 x 6'5 (4.37m x 1.96m)

OUTSIDE

Balcony: 28'0 x 5'2 (8.54m x 1.58m)
Store Room

Second Floor

Approx. 78.0 sq. metres (839.2 sq. feet)



Call Hornchurch - 01708 437777 ■ douglasallen.co.uk

- A private rental licensing scheme applies to some properties in this area, please contact us before proceeding
- Appliances & services are untested, dimensions are approximate and floor plans are not to scale

- Legal advice should be taken to verify fixtures/fittings, planning, alterations and/or lease details