



Price

£205,000

Leasehold

1x  1x  1x 

**Verve Apartments,
Mercury Gardens,
Romford, Essex, RM1
3FD**

OVER 60?

Secure this property
for up to **59% less!**



**DOUGLAS
ALLEN**

Helping you move forwards



Main features

- **Modern Apartment - Converted 8 years ago**
- **Concierge Service**
- **Lift Access**
- **Bike Storage Area**
- **Secure Video Entry Phone System**
- **Walking distance of Romford Town Centre + Elizabeth Line Station**

Accommodation

SECOND FLOOR

Hallway : 7'5 x 3'4 (2.26m x 1.02m)

Lounge/Kitchen/Diner: 10'1 x 9'3 (3.08m x 2.82m) plus 7'3 x 6'2 (2.21m x 1.88m)

Bedroom: 9'7 x 8'9 (2.92m x 2.67m)

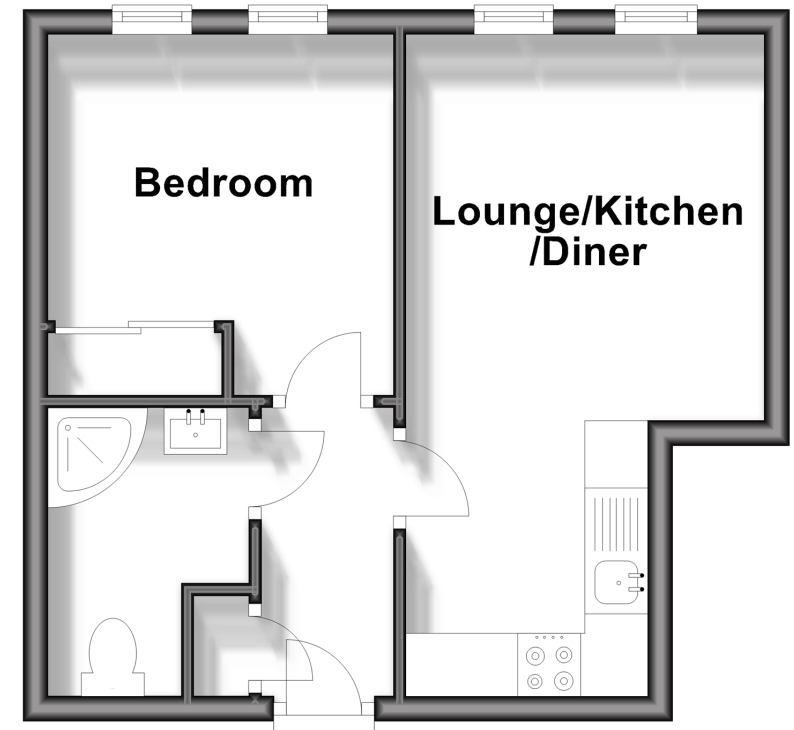
Shower Room: 7'5 x 5'1 (2.26m x 1.55m)

OUTSIDE

Bike Store

Second Floor

Approx. 27.9 sq. metres (300.8 sq. feet)



Call Hornchurch - 01708 437777 ■ douglasallen.co.uk

- A private rental licensing scheme applies to some properties in this area, please contact us before proceeding
- Legal advice should be taken to verify fixtures/fittings, planning, alterations and/or lease details
- Appliances & services are untested, dimensions are approximate and floor plans are not to scale
- Through a Homewise Home For Life Plan people aged 60+ can secure this property for up to 59% less, by purchasing a Lifetime Lease.



51916009/20240307/DT/RG