



OVER 60?

Secure this property
for up to **59% less!**

Price

£205,000

Leasehold

1x  1x  1x 

**Marsden House,
Leamington Close,
Harold Hill, Essex, RM3**

 **DOUGLAS
ALLEN**
Helping you move forwards



Main features

- Offered with no onward chain a ground floor flat with own rear garden
- Ideal first purchase or investment opportunity
- Double glazing & gas central heating
- Situated less than a mile to Harold Wood Elizabeth Line Station
- Extra outside storage cupboard

Accommodation

GROUND FLOOR

Entrance Hall

Lounge/Diner: 13'3 x 11'4 (4.04m x 3.46m)

Kitchen: 11'1 x 9'8 (3.38m x 2.95m)

Bedroom: 11'8 x 9'9 (3.56m x 2.97m)

Bathroom

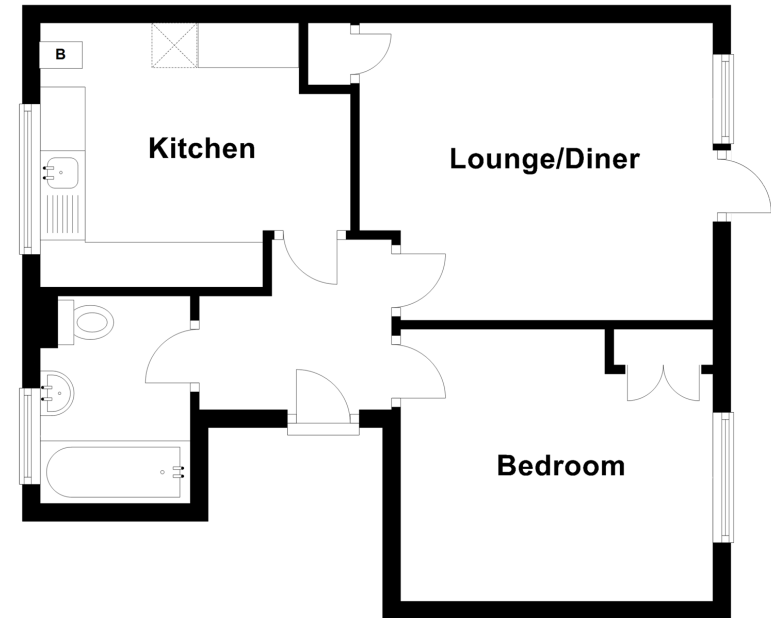
OUTSIDE

Rear Garden

External Storage Cupboard

Ground Floor

Approx. 41.6 sq. metres (448.2 sq. feet)



Call Hornchurch - 01708 437777 ■ douglasallen.co.uk

- A private rental licensing scheme applies to some properties in this area, please contact us before proceeding
- Legal advice should be taken to verify fixtures/fittings, planning, alterations and/or lease details
- Appliances & services are untested, dimensions are approximate and floor plans are not to scale
- Through a Homewise Home For Life Plan people aged 60+ can secure this property for up to 59% less, by purchasing a Lifetime Lease.



51916006/20240429/CC1/DT