



**Guide Price**  
**£280,000**

**Freehold**

1x  1x  1x 

**Dovetree Court, North  
Hill Drive, Harold Hill,  
Romford, Essex, RM3**

**OVER 60?**

Secure this property  
for up to **59% less!**

 **DOUGLAS  
ALLEN**  
Helping you move forwards





## Main features

- Ideal first purchase starter home
- Own wrap around secluded garden
- Residents only parking area
- Walking distance to Noak Hill Recreation Ground
- Situated close to local amenities & transport links

## Accommodation

### GROUND FLOOR

Hall

Lounge: 15'9 x 11'3 (4.80m x 3.43m)

Kitchen: 12'9 x 5'9 (3.89m x 1.75m)

### FIRST FLOOR

Landing

Bathroom

Bedroom: 10'6 x 9'7 (3.20m x 2.92m)

### OUTSIDE

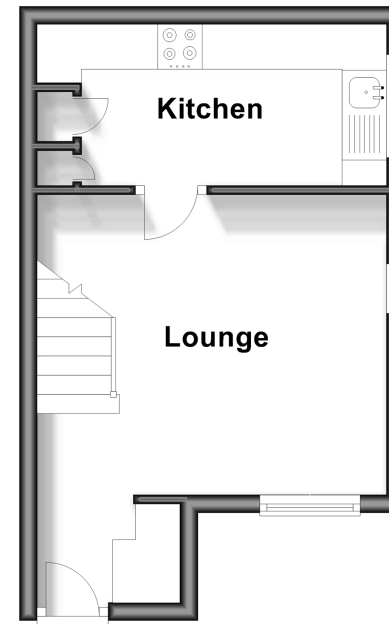
Front Garden

Rear Garden

Residents Parking

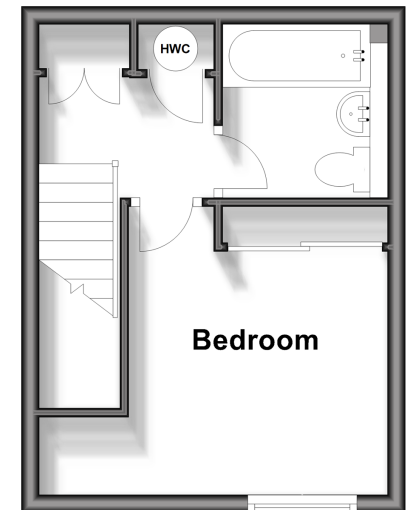
### Ground Floor

Approx. 22.6 sq. metres (242.8 sq. feet)



### First Floor

Approx. 20.6 sq. metres (222.0 sq. feet)



**Call Hornchurch - 01708 437777 ■ [douglasallen.co.uk](http://douglasallen.co.uk)**

- A private rental licensing scheme applies to some properties in this area, please contact us before proceeding
- Legal advice should be taken to verify fixtures/fittings, planning, alterations and/or lease details
- Appliances & services are untested, dimensions are approximate and floor plans are not to scale
- Through a Homewise Home For Life Plan people aged 60+ can secure this property for up to 59% less, by purchasing a Lifetime Lease.



51915989/20240304/DT/DT