



Price
£425,000

Freehold

3x  1x  1x 

**Stifford Road, Aveley,
South Ockendon, Essex,
RM15**

OVER 60?

Secure this property
for up to **59% less!**

 **DOUGLAS
ALLEN**
Helping you move forwards



Main features

- Good size family home with off road parking and a garage
- Offered with no onward chain
- Great condition throughout
- Good size rear garden
- Close to Local amenities and road links to London

Accommodation

GROUND FLOOR

Hallway: 8'8 x 3'4 (2.64m x 1.02m)

Lounge: 12'8 into bay x 10'4 (3.86m x 3.15m)

Dining Area : 13'6 x 10'8 (4.12m x 3.25m)

Kitchen: 14'2 x 6'11 (4.32m x 2.11m)

FIRST FLOOR

Bedroom 1: 13'5 x 10'4 (4.09m x 3.15m)

Bedroom 2 : 10'8 x 10'4 (3.25m x 3.15m)

Bedroom 3 : 9'9 x 7'7 (2.97m x 2.31m)

Bathroom

OUTSIDE

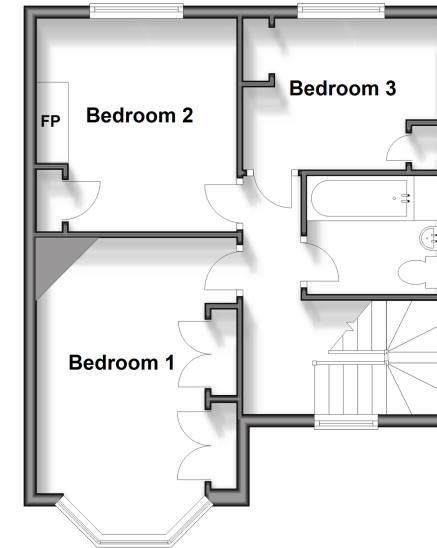
Rear Garden

Off road parking

Garage: 18'5 x 7'0 (5.62m x 2.14m)

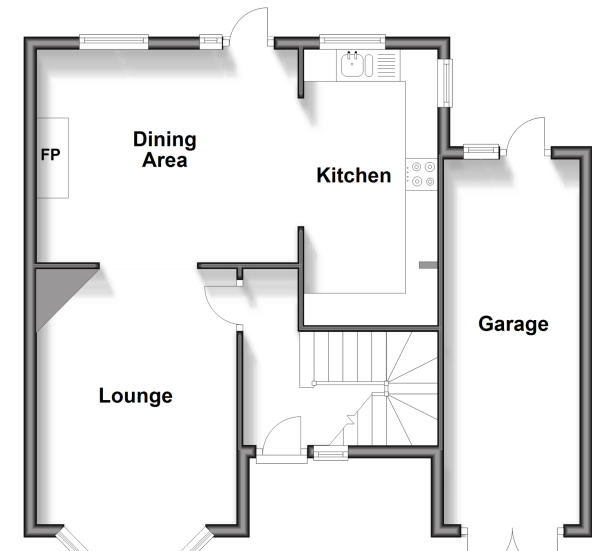
First Floor

Approx. 43.1 sq. metres (463.8 sq. feet)



Ground Floor

Approx. 43.1 sq. metres (463.8 sq. feet)



Call Hornchurch - 01708 437777 ■ douglasallen.co.uk

- A private rental licensing scheme applies to some properties in this area, please contact us before proceeding
- Legal advice should be taken to verify fixtures/fittings, planning, alterations and/or lease details
- Appliances & services are untested, dimensions are approximate and floor plans are not to scale
- Through a Homewise Home For Life Plan people aged 60+ can secure this property for up to 59% less, by purchasing a Lifetime Lease.



51915978/20240229/CG/DT