



**Offers In  
Excess Of  
£525,000  
Freehold**

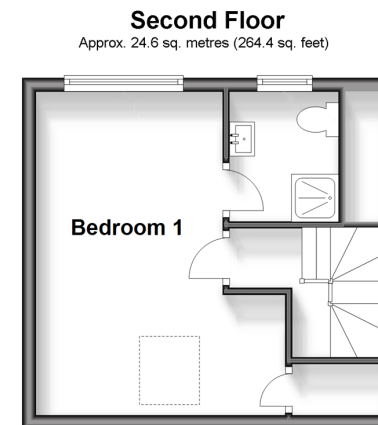
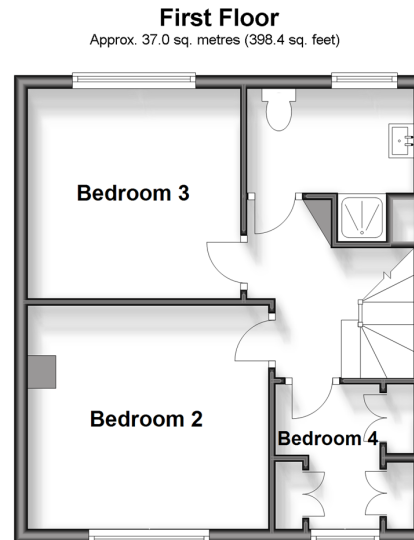
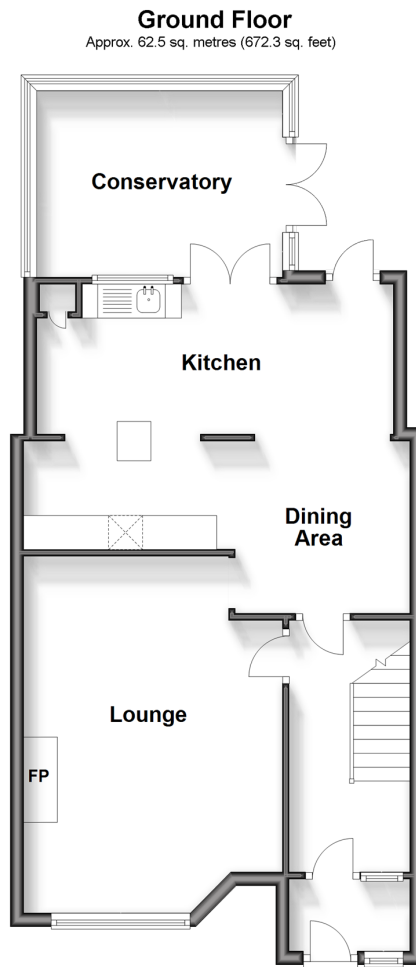
4x  2x  2x 

**Clyde Crescent,  
Upminster, Essex, RM14**

**OVER 60?**

Secure this property  
for up to **59% less!**

 **DOUGLAS  
ALLEN**  
Helping you move forwards



## Accommodation

### GROUND FLOOR

Hallway

Lounge: 18'1 x 12'6 (5.52m x 3.81m)

Kitchen Dining Area: 18'8 x 17'3 (5.69m x 5.26m)

Conservatory: 12'0 x 9'5 (3.66m x 2.87m)

### FIRST FLOOR

Landing

Bedroom 2: 10'3 x 10'1 (3.13m x 3.08m)

Bedroom 3: 11'6 x 10'9 (3.51m x 3.28m)

Bedroom 4: 7'5 x 7'0 (2.26m x 2.14m)

Shower Room

### SECOND FLOOR

Bedroom 1: 14'9 x 8'9 maximum  
(4.50m x 2.67m)

En-Suite Shower Room

### OUTSIDE

Off Road Parking

Rear Garden

Rear Access





## Main features

- Extended mid terraced home decorated to a high standard
- En-suite to bedroom 1
- Conservatory to rear
- Off road parking
- Upminster Station approximately 1 mile
- Situated in a quiet and good location for local schools and amenities



### Nearest Schools

Primary Schools: Engayne Primary 0.0 miles, The James Oglethorpe Primary 0.9 miles, Upminster Junior School 1.2 miles  
Secondary Schools: Hall Mead School 0.5 miles, The Coopers' Company and Coborn School 1.0 miles,



### Transport Information

Train Stations: Upminster 1.1 miles, Upminster Bridge 1.6 miles, Emerson Park 2.0 miles, Harold Wood 2.2 miles, Hornchurch 2.3 miles



### Address

Clyde Crescent, Upminster, Essex, RM14



### Directions

For directions to this property please contact us.



