



Price
£485,000

Freehold

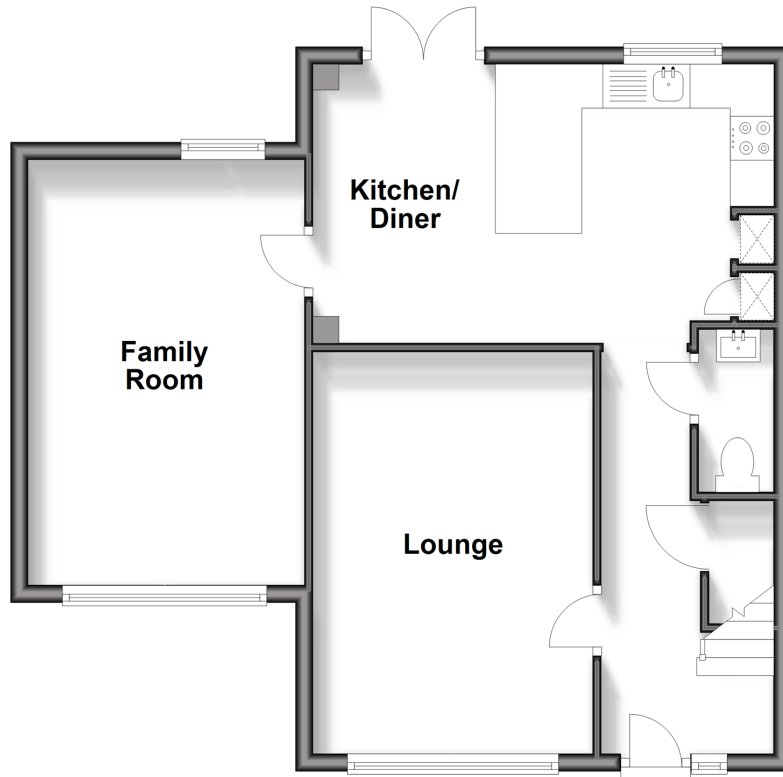
3x  2x  2x 

**Rochester Road,
Hornchurch, Essex,
RM12**

 **DOUGLAS
ALLEN**
Helping you move forwards

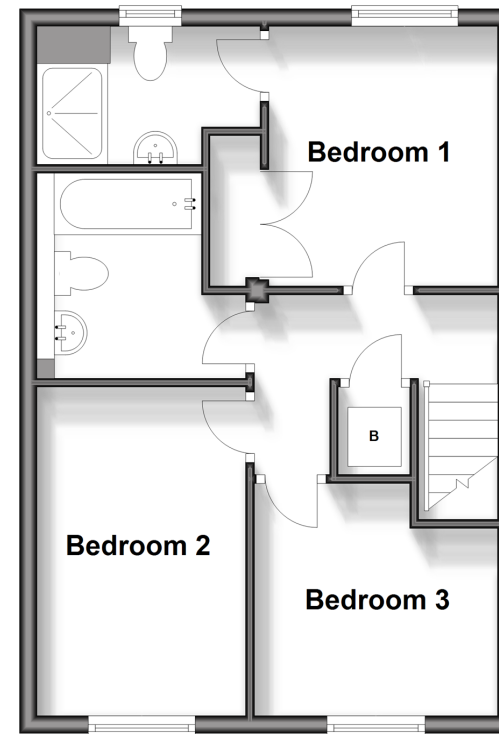
Ground Floor

Approx. 57.3 sq. metres (617.3 sq. feet)



First Floor

Approx. 41.5 sq. metres (446.7 sq. feet)



Accommodation

GROUND FLOOR

Hallway
Lounge: 14'9 x 10'5 (4.50m x 3.18m)
Kitchen/Diner: 17'4 x 10'5 (5.29m x 3.18m)
Family Room: 15'7 x 8'7 (4.75m x 2.62m)
Cloakroom

FIRST FLOOR

Bedroom 1: 9'7 x 8'6 (2.92m x 2.59m)
En-Suite
Bedroom 2: 12'3 x 7'9 (3.74m x 2.36m)
Bedroom 3: 9'0 x 8'8 (2.75m x 2.64m)
Bathroom

OUTSIDE

Rear Garden
Off Road Parking



Main features

- Offered with no onward chain semi detached home
- Well maintained with modern decoration throughout
- En-suite to bedroom 1
- Situated in a cul de sac
- Convenient location close to Hornchurch Country Park



Nearest Schools

Primary Schools: The R J Mitchell Primary 0.1 miles, St Alban's Catholic Primary 0.2 miles, Scargill Junior School 0.4 miles
Secondary Schools: Brittons Academy 0.6 miles, The Sanders Draper School and Specialist Science College 0.9



Transport Information

Train Stations: Elm Park 0.8 miles, Hornchurch 1.2 miles, Rainham 1.5 miles, Emerson Park 2.3 miles, Upminster 2.4 miles



Address

Rochester Road, Hornchurch, Essex, RM12



Directions

For directions to this property please contact us.

