



Price
£240,000

Leasehold

2x  1x  1x 

**Victor Approach,
Hornchurch, Essex,
RM12**



Main features

- Well located ground floor split level maisonette
- Some modernisation required
- Close to Town Centre and Shopping facilities
- New long lease granted on completion
- No onward chain

Accommodation

GROUND FLOOR

Hallway

Kitchen: 10'8 x 8'5 (3.25m x 2.57m)

Lounge: 14'9 x 11'6 (4.50m x 3.51m)

FIRST FLOOR

Landing

Bedroom 1 : 15'2 x 8'8 (4.63m x 2.64m)

Bedroom 2 : 13'8 x 8'5 (4.17m x 2.57m)

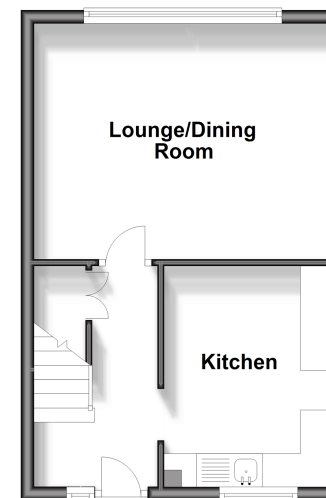
Bathroom: 6'1 x 5'8 (1.86m x 1.73m)

OUTSIDE

Communal Gardens

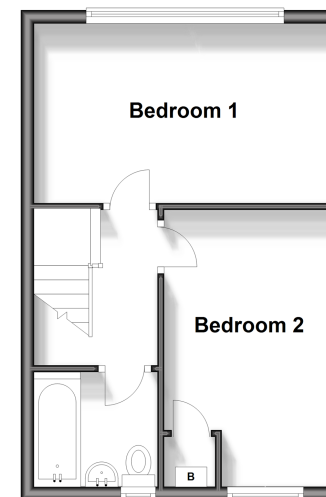
Ground Floor

Approx. 31.7 sq. metres (341.5 sq. feet)



First Floor

Approx. 31.7 sq. metres (341.5 sq. feet)



Call Hornchurch - 01708 437777 ■ douglasallen.co.uk

- A private rental licensing scheme applies to some properties in this area, please contact us before proceeding
- Legal advice should be taken to verify fixtures/fittings, planning, alterations and/or lease details
- Appliances & services are untested, dimensions are approximate and floor plans are not to scale



51915945/20240205/DT/DT