



**Offers In
Excess Of
£450,000
Freehold**

3x  2x  1x 

**Brights Avenue,
Rainham, Essex, RM13**

OVER 60?

Secure this property
for up to **59% less!**

 **DOUGLAS
ALLEN**
Helping you move forwards



Main features

- Extended and recently refurbished semi detached home
- Ground floor shower room
- En-suite to bedroom one
- Less than half a mile to Rainham Station
- Good location for the A13 & M25 road links to Lakeside & London

Accommodation

GROUND FLOOR

Porch
Hallway
Shower Room: 7'6 x 4'5 (2.29m x 1.35m)
Lounge: 23'7 x 11'6 (7.19m x 3.51m)
Dining Area
Kitchen: 15'9 x 11'0 (4.80m x 3.36m)

FIRST FLOOR

Landing
Bedroom 1: 13'7 x 9'9 (4.14m x 2.97m)
En-suite
Bedroom 2: 10'5 x 7'9 (3.18m x 2.36m)
Bedroom 3: 8'4 x 7'7 (2.54m x 2.31m)

OUTSIDE

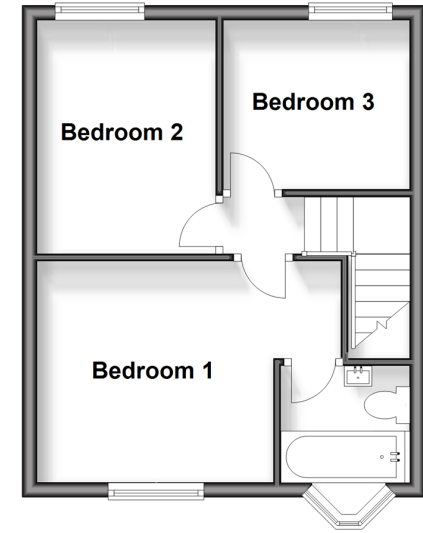
Off Road Parking
Rear Garden

Call Hornchurch - 01708 437777 ■ douglasallen.co.uk

- A private rental licensing scheme applies to some properties in this area, please contact us before proceeding
- Legal advice should be taken to verify fixtures/fittings, planning, alterations and/or lease details
- Appliances & services are untested, dimensions are approximate and floor plans are not to scale
- Through a Homewise Home For Life Plan people aged 60+ can secure this property for up to 59% less, by purchasing a Lifetime Lease.

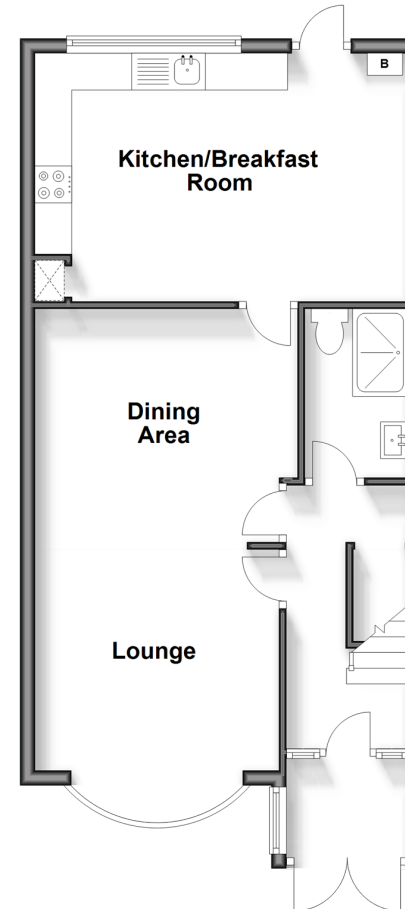
First Floor

Approx. 31.8 sq. metres (341.9 sq. feet)



Ground Floor

Approx. 51.5 sq. metres (554.5 sq. feet)



51915925/20240426/DT/RG