



Price
£350,000

Leasehold

2x  1x  1x 

**Pell Court, Hornchurch
Road, Hornchurch,
Essex, RM12**



Main features

- Offered with no onward chain, second floor retirement flat
- Communal lounge and gardens
- Guest suite for visitors to hire via the site manager
- Gated parking for residents and visitors
- Walk-in wardrobe
- Convenient location for local amenities and bus routes

Accommodation

GROUND FLOOR

Communal Entrance
Communal Lounge

SECOND FLOOR

Hallway
Kitchen: 10'3 x 8'5 (3.13m x 2.57m)
Lounge/Dining Room: 14'2 x 13'5 (4.32m x 4.09m)
Bedroom 1: 15'3 x 10'4 (4.65m x 3.15m)
Walk in Wardrobe: 11'9 x 3'4 (3.58m x 1.02m)
Storage
Bedroom 2: 9'4 x 8'7 (2.85m x 2.62m)
Bathroom: 8'6 x 7'8 (2.59m x 2.34m)

GUEST SUITE

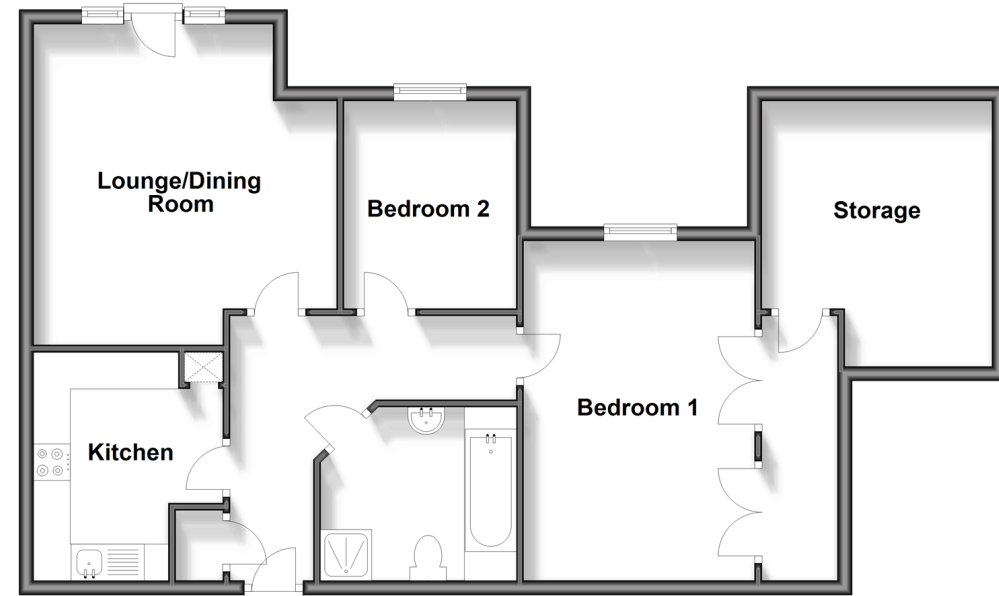
Available to Hire

OUTSIDE

Communal Gardens
Resident/Visitors Parking

Second Floor

Approx. 77.1 sq. metres (829.6 sq. feet)



Call Hornchurch - 01708 437777 ■ douglasallen.co.uk

■ A private rental licensing scheme applies to some properties in this area, please contact us before proceeding

■ Appliances & services are untested, dimensions are approximate and floor plans are not to scale

■ Legal advice should be taken to verify fixtures/fittings, planning, alterations and/or lease details



51915924/20240315/DT/DT