



Price
£400,000

Freehold

3x  1x  1x 

**Burwood Gardens,
Rainham, Essex, RM13**

OVER 60?

Secure this property
for up to **59% less!**

 **DOUGLAS
ALLEN**
Helping you move forwards



Main features

- Semi detached home with rear garden in excess of 70'
- Ground floor Cloakroom
- Close to local schools
- Super fast fibre broadband available subject to provider
- Potential to extend subject to local planning permission

Accommodation

GROUND FLOOR

Hallway

Lounge: 14'3 x 11'4 (4.35m x 3.46m)

Dining Area: 10'3 x 9'9 (3.13m x 2.97m)

Kitchen: 9'8 x 9'0 (2.95m x 2.75m)

Cloakroom

FIRST FLOOR

Landing

Bedroom 1: 14'0 (4.27m) narrowing to 12'0 (3.66m) x 9'9 (2.97m)

Bedroom 2: 14'0 into fitted wardrobes x 11'4 (4.27m x 3.46m)

Bedroom 3: 8'2 x 7'7 (2.49m x 2.31m)

Bathroom: 6'7 x 5'5 (2.01m x 1.65m)

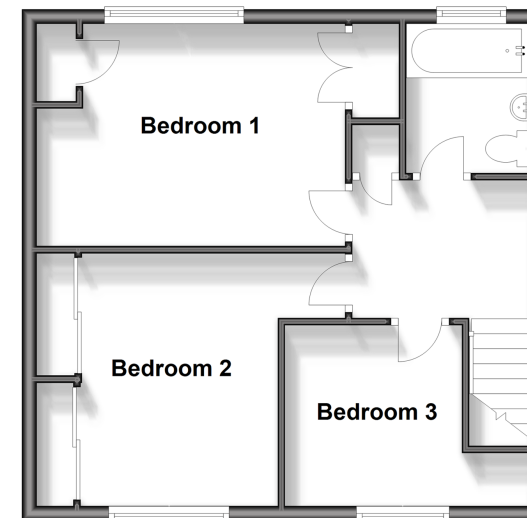
OUTSIDE

Rear Garden in excess of 70'

Front Garden

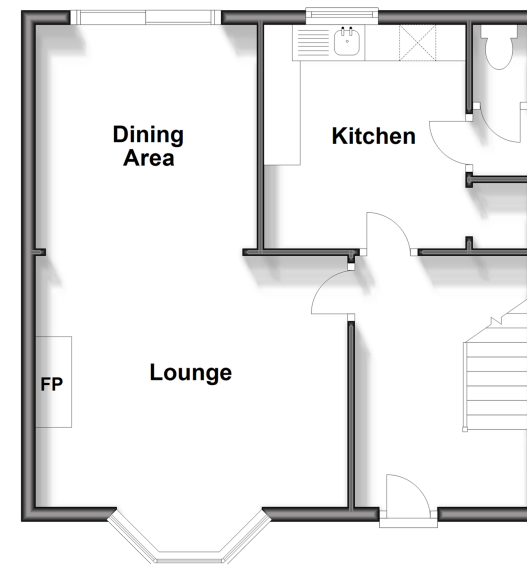
First Floor

Approx. 45.4 sq. metres (488.2 sq. feet)



Ground Floor

Approx. 45.4 sq. metres (488.9 sq. feet)



Call Hornchurch - 01708 437777 ■ douglasallen.co.uk

- A private rental licensing scheme applies to some properties in this area, please contact us before proceeding
- Legal advice should be taken to verify fixtures/fittings, planning, alterations and/or lease details
- Appliances & services are untested, dimensions are approximate and floor plans are not to scale
- Through a Homewise Home For Life Plan people aged 60+ can secure this property for up to 59% less, by purchasing a Lifetime Lease.



51915913/20240224/CC1/JC