



OVER 60?

Secure this property
for up to **59% less!**

Price

£375,000

Freehold

3x  1x  1x 

**Robinson Close,
Hornchurch, Essex,
RM12**

 **DOUGLAS
ALLEN**
Helping you move forwards



Main features

- Ideal starter home or investment opportunity
- Off road parking
- Cul-de-sac location
- Potential to extend
- Situated less than a mile to Elm Park Train Station

Accommodation

GROUND FLOOR

Lounge: 15'4 x 13'8 (4.68m x 4.17m)

Kitchen/Diner: 15'6 x 10'4 (4.73m x 3.15m)

FIRST FLOOR

Landing

Bedroom 1: 14'5 x 8'8 (4.40m x 2.64m)

Bedroom 2: 10'3 x 8'5 (3.13m x 2.57m)

Bedroom 3: 8'2 x 6'3 (2.49m x 1.91m)

Shower Room

OUTSIDE

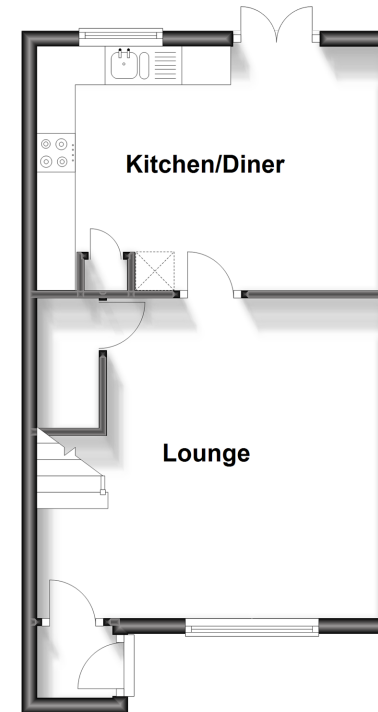
Rear Garden
Off Road Parking
Front Garden

Call Hornchurch - 01708 437777 ■ douglasallen.co.uk

- A private rental licensing scheme applies to some properties in this area, please contact us before proceeding
- Legal advice should be taken to verify fixtures/fittings, planning, alterations and/or lease details
- Appliances & services are untested, dimensions are approximate and floor plans are not to scale
- Through a Homewise Home For Life Plan people aged 60+ can secure this property for up to 59% less, by purchasing a Lifetime Lease.

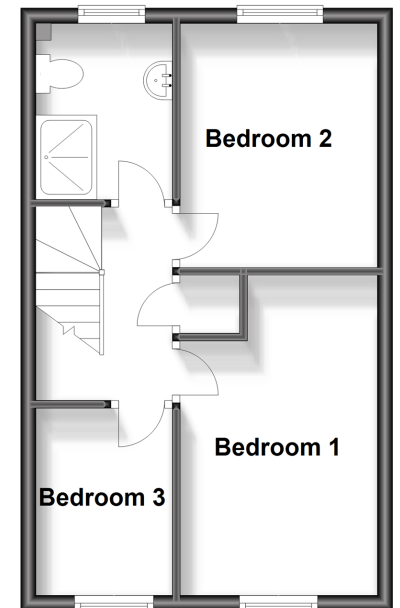
Ground Floor

Approx. 34.2 sq. metres (367.6 sq. feet)



First Floor

Approx. 33.1 sq. metres (356.7 sq. feet)



51915852/20230930/DT/DT