



Price

£375,000

Freehold

3x  1x  2x 

**Newtons Close,
Rainham, Essex, RM13**

OVER 60?

Secure this property
for up to **59% less!**

 **DOUGLAS
ALLEN**
Helping you move forwards



Main features

- End terraced home in need of modernisation
- Offered with no chain
- Great size rear garden
- Off street parking
- Detached garage
- Located in a great area for school catchments & easy reach of local amenities

Accommodation

GROUND FLOOR

Hallway

Living Room : 12'3 x 11'1 (3.74m x 3.38m)

Kitchen: 10'4 x 8'0 (3.15m x 2.44m)

Bathroom: 6'3 x 5'6 (1.91m x 1.68m)

FIRST FLOOR

Landing

Bedroom 1 : 11'9 x 10'7 (3.58m x 3.23m)

Bedroom 2 : 11'8 x 7'9 (3.56m x 2.36m)

Bedroom 3 : 8'8 x 6'4 (2.64m x 1.93m)

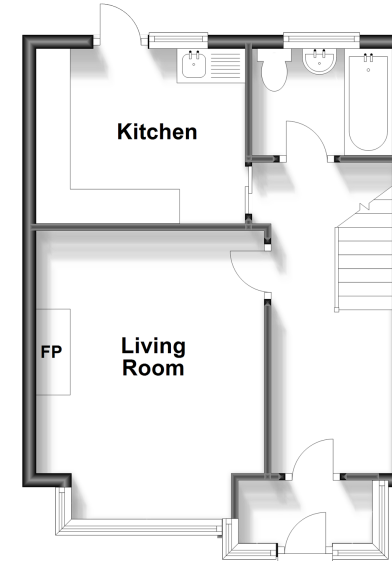
OUTSIDE

Rear Garden

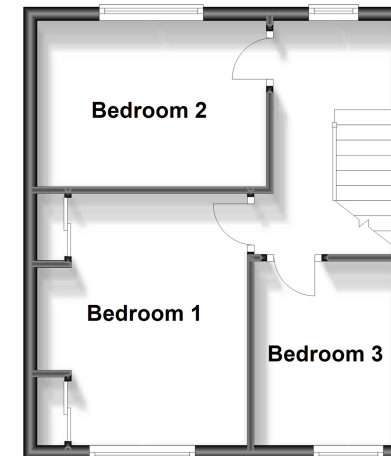
Detached Garage

Off Road Parking

Ground Floor
Approx. 35.8 sq. metres (385.4 sq. feet)

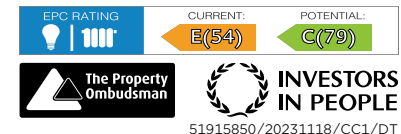


First Floor
Approx. 32.2 sq. metres (346.5 sq. feet)



Call Hornchurch - 01708 437777 ■ douglasallen.co.uk

- A private rental licensing scheme applies to some properties in this area, please contact us before proceeding
- Legal advice should be taken to verify fixtures/fittings, planning, alterations and/or lease details
- Appliances & services are untested, dimensions are approximate and floor plans are not to scale
- Through a Homewise Home For Life Plan people aged 60+ can secure this property for up to 59% less, by purchasing a Lifetime Lease.



51915850/20231118/CC1/DT