



OVER 60?

Secure this property
for up to **59% less!**

Price

£375,000

Freehold

2x  1x  1x 

**South End Road,
Rainham, Essex, RM13**

 **DOUGLAS
ALLEN**
Helping you move forwards



Main features

- Unextended semi detached bungalow
- Garage and off road parking
- Offered with no onward chain
- Potential to extend & improve
- Situated in a good location for local schools & amenities

Accommodation

GROUND FLOOR

Hallway

Lounge/Diner: 27'0 x 10'7 (8.24m x 3.23m)

Kitchen: 8'9 x 6'8 (2.67m x 2.03m)

Bedroom 1: 13'0 x 8'7 (3.97m x 2.62m)

Bedroom 2: 10'9 x 8'7 (3.28m x 2.62m)

Bathroom

OUTSIDE

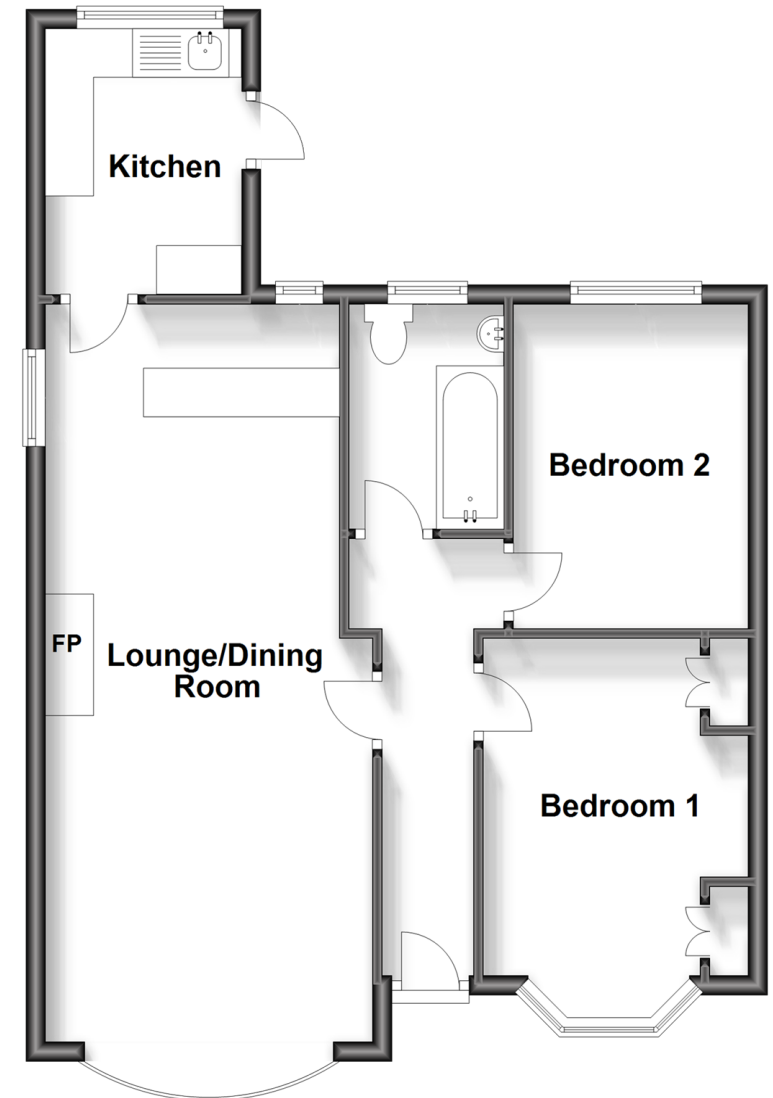
Rear Garden

Off Road Parking

Garage

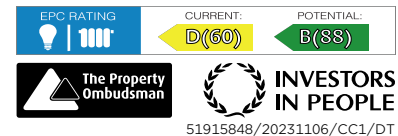
Ground Floor

Approx. 58.9 sq. metres (634.5 sq. feet)



Call Hornchurch - 01708 437777 ■ douglasallen.co.uk

- A private rental licensing scheme applies to some properties in this area, please contact us before proceeding
- Legal advice should be taken to verify fixtures/fittings, planning, alterations and/or lease details
- Appliances & services are untested, dimensions are approximate and floor plans are not to scale
- Through a Homewise Home For Life Plan people aged 60+ can secure this property for up to 59% less, by purchasing a Lifetime Lease.



51915848/20231106/CC1/DT