



**OVER 60?**

Secure this property  
for up to **59% less!**

**Price**

**£700,000**

**Freehold**

5x  2x  1x 

**Stanley Road North,  
Rainham, Essex, RM13**



**DOUGLAS  
ALLEN**

Helping you move forwards

## Accommodation

### GROUND FLOOR

Entrance Hallway: 13'3 x 8'1 (4.04m x 2.47m)

Bedroom 3: 11'7 x 9'7 (3.53m x 2.92m)

Bedroom 4: 15'5 x 9'7 (4.70m x 2.92m)

Bedroom 5: 10'7 x 9'8 (3.23m x 2.95m)

Bathroom: 7'4 x 5'6 (2.24m x 1.68m)

### FIRST FLOOR

Landing

Bedroom 1: 17'0 x 13'2 (5.19m x 4.02m)

Bedroom 2: 17'0 x 11'8 (5.19m x 3.56m)

Shower Room

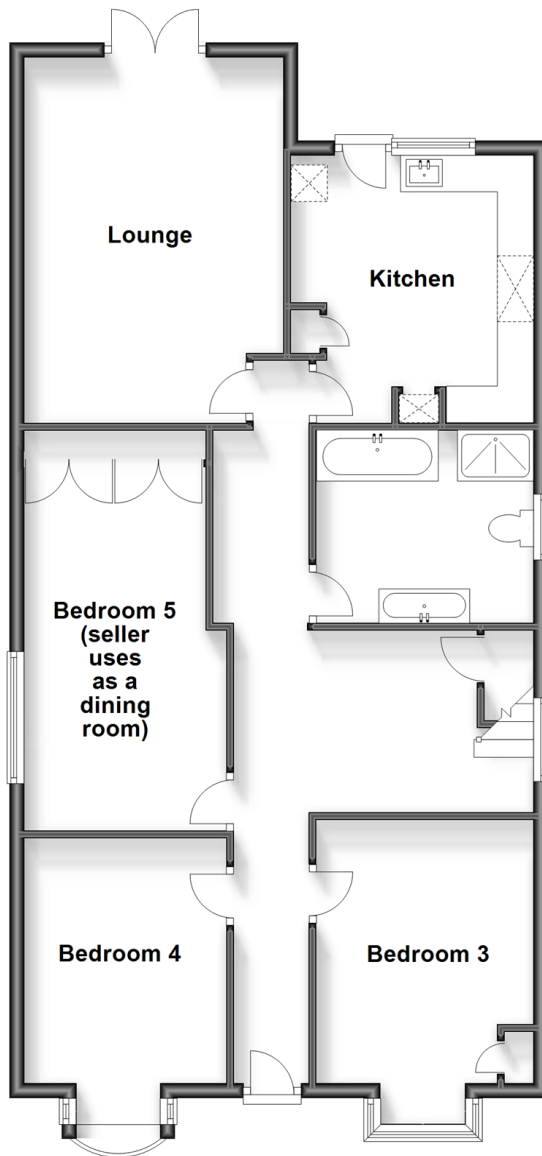
### OUTSIDE

Rear Garden

Off Road Parking

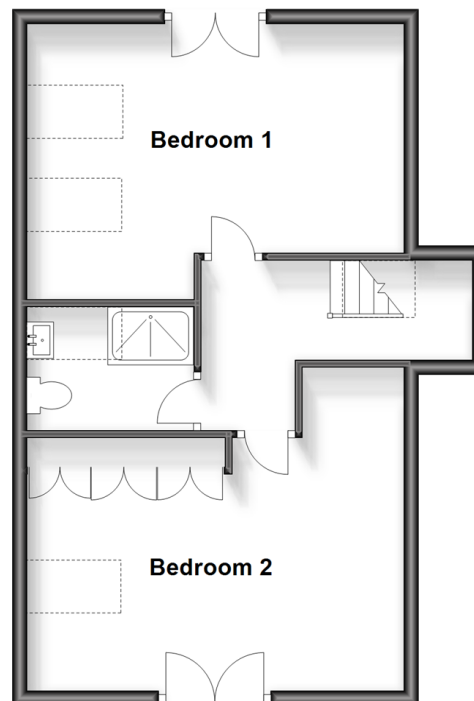
### Ground Floor

Approx. 95.5 sq. metres (1028.2 sq. feet)



### First Floor

Approx. 48.8 sq. metres (525.2 sq. feet)







## Main features

- Detached property newly refurbished and finished to a high specification throughout
- Large rear garden overlooking fields
- Planning permission has been obtained for first floor rear extension
- Ground floor bathroom & first floor shower room
- Positioned in a good location for local schools & road links A13 & M25 to London



### Nearest Schools

Primary Schools: Whybridge Junior School 0.3 miles, Newtons Primary 0.5 miles, The Leys Primary 0.6 miles  
Secondary Schools: Brittons Academy 0.3 miles, Dagenham Park Community School 1.1 miles, Eastbrook Comprehensive School 1.5 miles



### Transport Information

Train Stations: Dagenham East 1.0 miles, Rainham 1.1 miles, Elm Park 1.4 miles, Dagenham Heathway 1.6 miles



### Address

Stanley Road North, Rainham, Essex, RM13



### Directions

For directions to this property please contact us.





Call Hornchurch Branch 01708 437777 ■ [douglasallen.co.uk](https://douglasallen.co.uk)



- A private rental licensing scheme applies to some properties in this area, please contact us before proceeding
- Appliances & services are untested, dimensions are approximate and floor plans are not to scale

- Legal advice should be taken to verify fixtures/fittings, planning, alterations and/or lease details
- Through a Homewise Home For Life Plan people aged 60+ can secure this property for up to 59% less, by purchasing a Lifetime Lease.



51915832/20231002/JC/JC