



**Offers In
Excess Of
£700,000
Freehold**

5x  3x  2x 

**Farm Way, Hornchurch,
Essex, RM12**

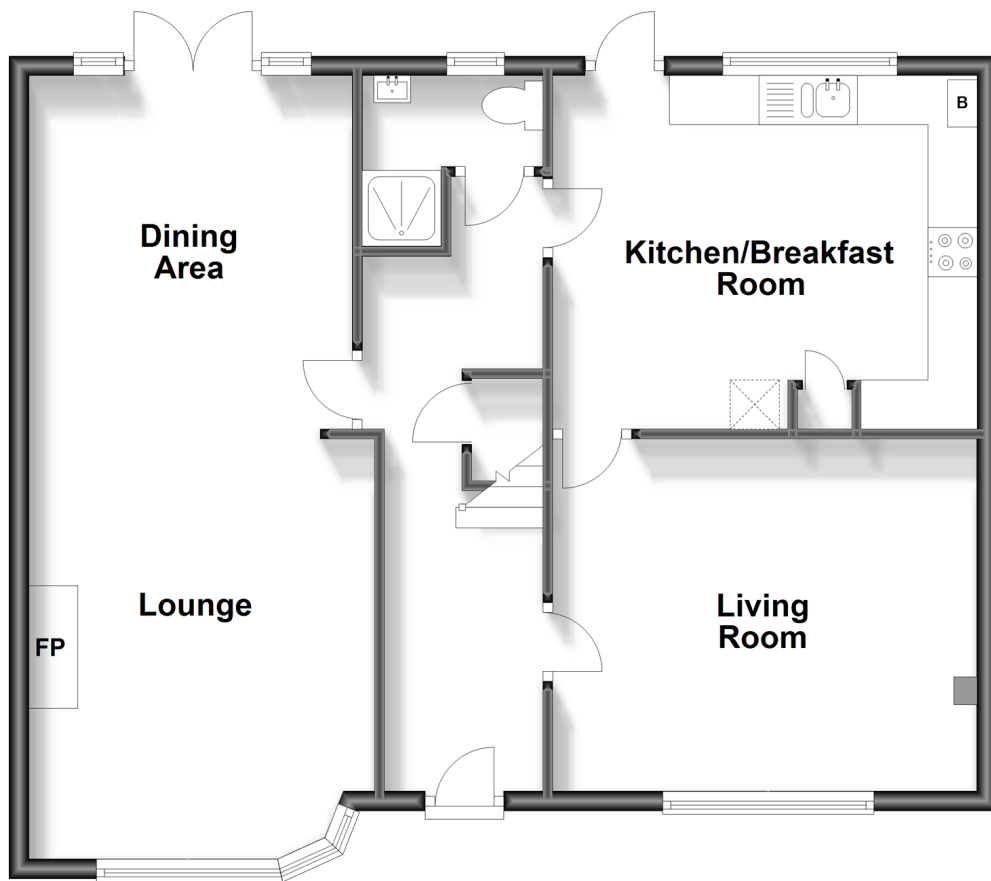
OVER 60?

Secure this property
for up to **59% less!**

 **DOUGLAS
ALLEN**
Helping you move forwards

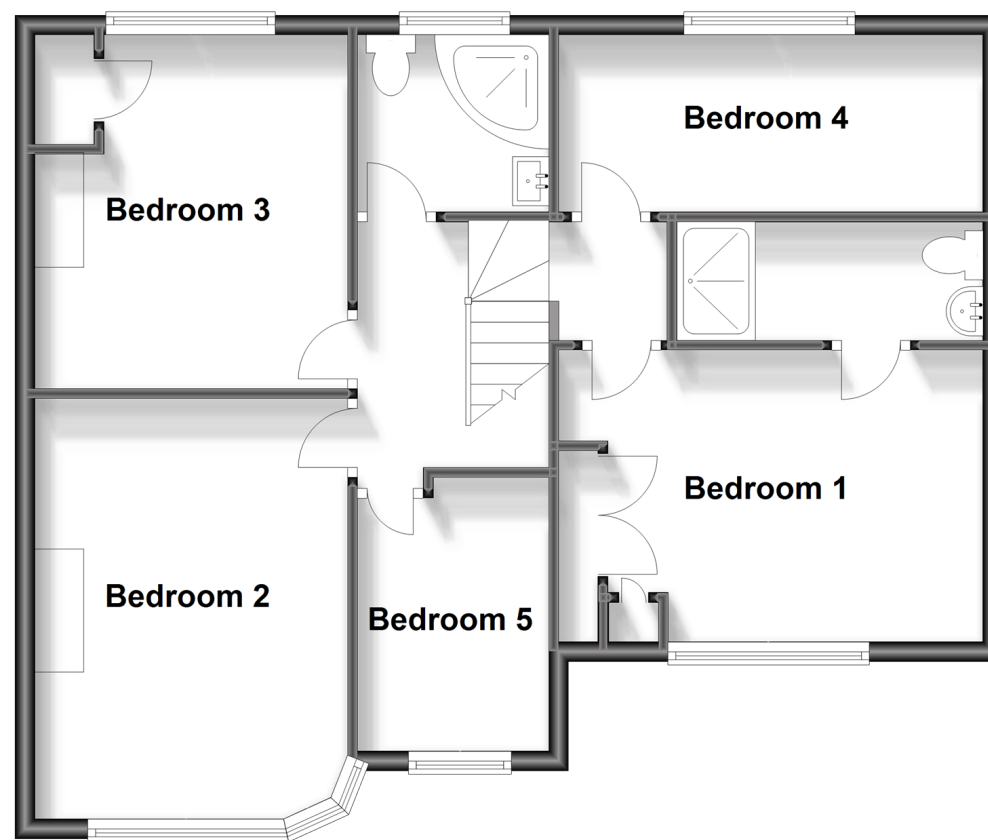
Ground Floor

Approx. 72.6 sq. metres (782.0 sq. feet)



First Floor

Approx. 67.4 sq. metres (725.4 sq. feet)



Accommodation

GROUND FLOOR

Hallway

Lounge/Dining Area: 26'8 x 10'6 (8.13m x 3.20m)

Kitchen/Breakfast Room: 14'1 x 12'0 (4.30m x 3.66m)

Shower Room: 5'9 x 5'6 (1.75m x 1.68m)

Living Room: 14'2 x 11'2 (4.32m x 3.41m)

FIRST FLOOR

Bedroom 1: 14'2 x 9'8 (4.32m x 2.95m)

En-suite: 9'1 x 3'9 (2.77m x 1.14m)

Bedroom 2: 13'9 x 10'2 (4.19m x 3.10m)

Bedroom 3: 12'0 x 10'2 (3.66m x 3.10m)

Bedroom 4: 14'3 x 5'5 (4.35m x 1.65m)

Bedroom 5: 8'7 x 6'6 (2.62m x 1.98m)

Bathroom: 6'5 x 5'9 (1.96m x 1.75m)

OUTSIDE

Off Road Parking

Rear Garden



Main features

- Larger than average extended semi detached family home
- En-Suite to Bedroom 1 and a ground floor shower room
- Ample off road parking
- Situated in a good location for local schools, amenities and is less than half a mile to Elm Park Station



Nearest Schools

Primary Schools: Elm Park Primary 0.1 miles, Benhurst Primary 0.3 miles, Scotts Primary 0.4 miles
Secondary Schools: Abbs Cross Academy 0.3 miles, The Sanders Draper School and Specialist Science College 0.4 miles, Hornchurch High School 0.7 miles



Transport Information

Train Stations: Elm Park 0.3 miles, Hornchurch 0.7 miles, Upminster Bridge 1.4 miles, Emerson Park 1.6 miles, Romford 2.0 miles, Upminster 2.0 miles



Address

Farm Way, Hornchurch, Essex, RM12



Directions

For directions to this property please contact us.

