



**Modern  
Auction**

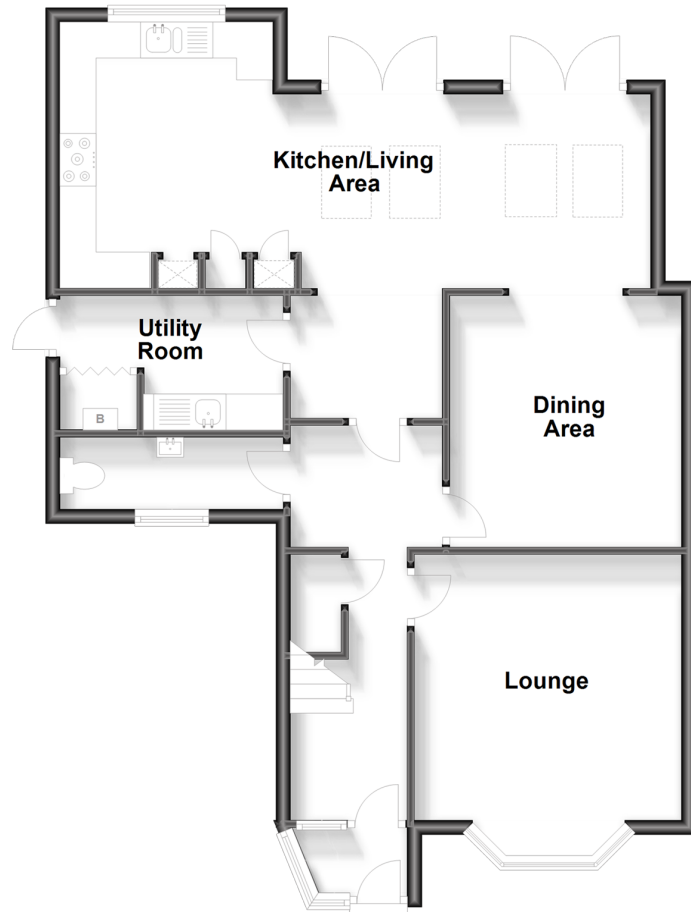
**£625,000  
Freehold**

4x  2x  2x 

**Woodfield Way,  
Hornchurch, Essex,  
RM12**

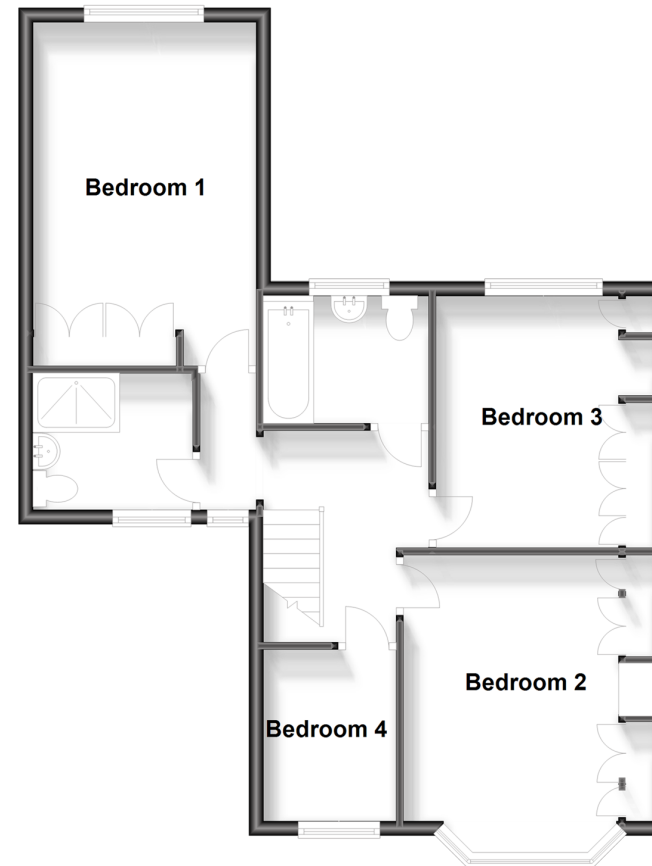
## Ground Floor

Approx. 75.0 sq. metres (806.8 sq. feet)



## First Floor

Approx. 60.9 sq. metres (655.9 sq. feet)



## Accommodation

### GROUND FLOOR

Porch

Hallway

Lounge: 13'6 x 12'4 (4.12m x 3.76m)

Dining area: 11'7 x 10'5 (3.53m x 3.18m)

Inner hallway: 6'11 x 6'5 (2.11m x 1.96m)

Cloakroom

Kitchen/living area: 12'1 x 9'8 (3.69m x 2.95m) plus 17'4 x 8'10 (5.29m x 2.69m)

Utility room: 9'7 x 6'0 (2.92m x 1.83m)

### FIRST FLOOR

Landing

Bedroom 1: 14'0 x 11'5 (4.27m x 3.48m)

Bedroom 2: 15'7 x 9'9 (4.75m x 2.97m)

Bedroom 3: 11'6 x 9'8 (3.51m x 2.95m)

Bedroom 4: 7'9 x 6'0 (2.36m x 1.83m)

Shower room: 7'6 x 5'10 (2.29m x 1.78m)

Bathroom: 6'8 x 6'6 (2.03m x 1.98m)

### OUTSIDE

Front garden

Off road parking

Large rear garden





## Main features

- For sale by modern auction T&C's apply
- Subject to a reserve price, buyers fees apply
- Extended to side and rear, four bedroom end of terrace house
- Exceptionally large rear garden with potential STPP
- Ground floor cloakroom & utility room
- Less than a mile to Hornchurch Train Station



### Nearest Schools

Primary Schools: Langtons Junior School 0.2 miles, Towers Junior School 0.5 miles, Suttons Primary 0.7 miles  
Secondary Schools: Abbs Cross Academy 0.7 miles, The Sanders Draper School 0.8 miles, Hornchurch High School 0.8 miles



### Transport Information

Train Stations: Hornchurch 0.4 miles, Emerson Park 0.6 miles, Upminster Bridge 0.7 miles, Elm Park 1.1 miles, Upminster 1.3 miles, Gidea Park 1.4 miles



### Address

Woodfield Way, Hornchurch, Essex, RM12



### Directions

For directions to this property please contact us.







## Auctioneer's Comments

This property is for sale by the Modern Method of Auction. Should you view, offer or bid on the property, your information will be shared with the Auctioneer, iamsold.

This method of auction requires both parties to complete the transaction within 56 days of the draft contract for sale being received by the buyers solicitor. This additional time allows buyers to proceed with mortgage finance (subject to lending criteria, affordability and survey).

The buyer is required to sign a reservation agreement and make payment of a non-refundable Reservation Fee. This being 4.2% of the purchase price including VAT, subject to a minimum of £6,000.00 including VAT. The Reservation Fee is paid in addition to purchase price and will be considered as part of the chargeable consideration for the property in the calculation for stamp duty liability.

Buyers will be required to go through an identification verification process with iamsold and provide proof of how the purchase would be funded.

This property has a Buyer Information Pack which is a collection of documents in relation to the property. The documents may not tell you everything you need to know about the property, so you are required to complete your own due diligence before bidding. A sample copy of the Reservation Agreement and terms and conditions are also contained within this pack.

The buyer will also make payment of £300.00 including VAT towards the preparation cost of the pack, where it has been provided by iamsold.

The property is subject to an undisclosed Reserve Price with both the Reserve Price and Starting Bid being subject to change.

The seller can instruct iamsold to agree a sale without a bidding process taking place or prior to a closing date. No further bids can be accepted after a buyer has paid a Reservation Fee.

## Referral Arrangements

Douglas Allen and Auctioneer may recommend the services of third parties to you. Whilst these services are recommended as it is believed they will be of benefit; you are under no obligation to use any of these services and you should always consider your options before services are accepted.

Where services are accepted the Auctioneer or Douglas Allen may receive payment for the recommendation and you will be informed of any referral arrangement and payment prior to any services being taken by you.

**TO VIEW OR MAKE A BID – Contact *Douglas Allen***  
**Or visit: <https://douglasallen.iamsold.co.uk>**