



Price
£425,000

Freehold

3x  1x  1x 

**Kingaby Gardens,
Rainham, Essex, RM13**

OVER 60?

Secure this property
for up to **59% less!**



Video Tour available



**DOUGLAS
ALLEN**

Helping you move forwards



Main features

- A good sized semi detached family home in a quiet and peaceful walkway location
- Potential to extend to the side STPP
- Close to good transport links and schools
- Some modernisation required
- Sold with no onward chain

Accommodation

GROUND FLOOR

Entrance porch
Entrance hall
Lounge: 22'4 (6.81m) x 14'0 (4.27m) narrowing to 10'9 at narrowest point (3.28m)
Kitchen: 10'0 x 8'9 (3.05m x 2.67m)
Dining room

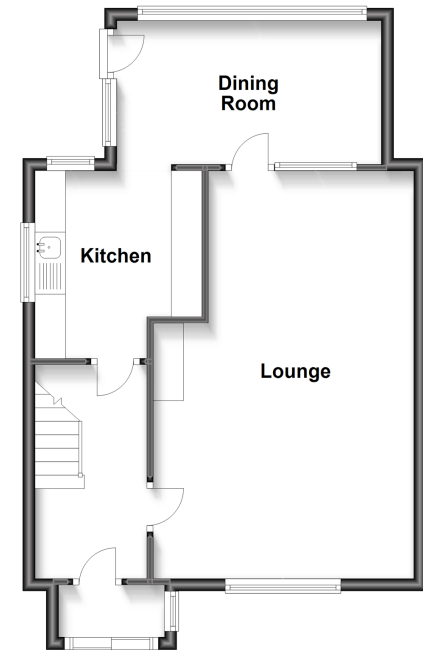
FIRST FLOOR

Landing
Bedroom 1: 12'9 (3.89m) x 12'8 (3.86m) narrowing to 10'1 at narrowest point (3.08m)
Bedroom 2: 14'2 x 8'5 (4.32m x 2.57m)
Bedroom 3: 10'1 x 8'1 (3.08m x 2.47m)
Bathroom

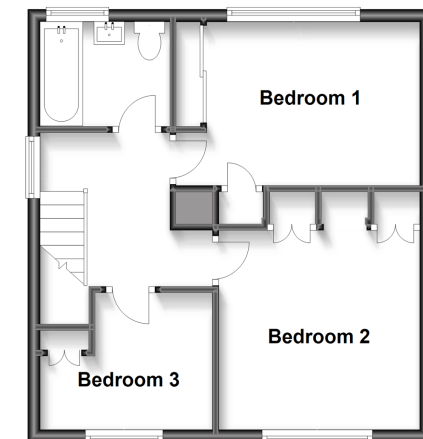
OUTSIDE

Rear Garden
Side Garden
Summer House: 11'4 x 9'4 (3.46m x 2.85m)
Front Garden

Ground Floor
Approx. 53.0 sq. metres (570.8 sq. feet)



First Floor
Approx. 40.9 sq. metres (440.1 sq. feet)



Call Hornchurch - 01708 437777 ■ douglasallen.co.uk

- A private rental licensing scheme applies to some properties in this area, please contact us before proceeding
- Legal advice should be taken to verify fixtures/fittings, planning, alterations and/or lease details
- Appliances & services are untested, dimensions are approximate and floor plans are not to scale
- Through a Homewise Home For Life Plan people aged 60+ can secure this property for up to 59% less, by purchasing a Lifetime Lease.



51915286/20230328/CC1/DT