



Price
£450,000

Freehold

3x  1x  1x 

**Chestnut Avenue,
Hornchurch, Essex,
RM12**

OVER 60?

Secure this property
for up to **59% less!**



Video Tour available

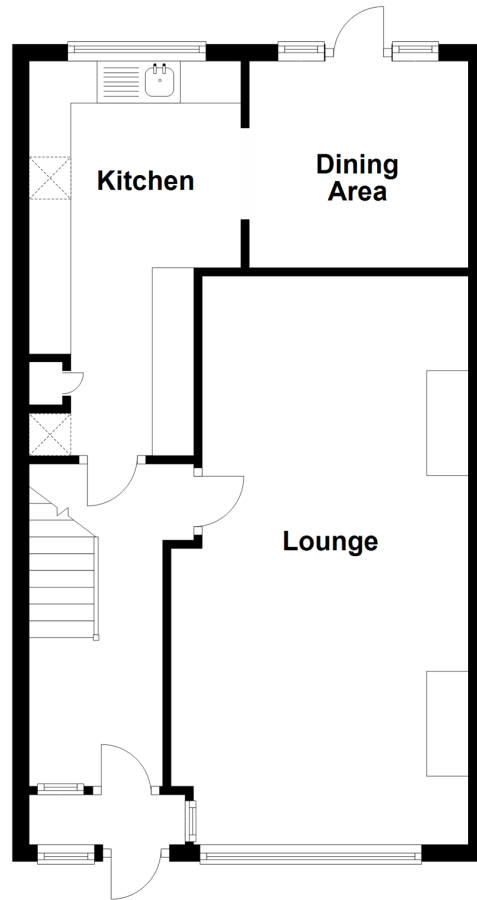


**DOUGLAS
ALLEN**

Helping you move forwards

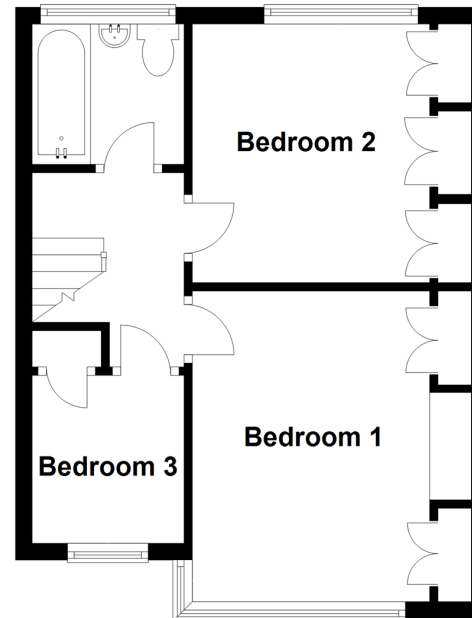
Ground Floor

Approx. 49.3 sq. metres (530.2 sq. feet)



First Floor

Approx. 35.0 sq. metres (376.4 sq. feet)



Accommodation

GROUND FLOOR

Hallway

Lounge: 22'1 x 11'1 (6.74m x 3.38m)

Dining area: 12'0 x 7'11 (3.66m x 2.41m)

Kitchen: 16'6 x 8'0 (5.03m x 2.44m)

Bedroom 1: 12'0 x 9'1 (3.66m x 2.77m)

Bedroom 2: 10'0 x 8'1 (3.05m x 2.47m)

Bedroom 3: 7'0 x 5'10 (2.14m x 1.78m)

Bathroom

FIRST FLOOR

Landing

OUTSIDE

Rear garden

Garage to rear

Off road parking



Main features

- Mid terraced family home with extended ground floor accommodation
- Detached double garage to rear
- Off road parking to front
- Close to an OFSTED rated 'OUTSTANDING' Primary School
- Situated close to local amenities
- Less than a mile to Elm Park Train Station



Nearest Schools

Primary Schools: Harrow Lodge Primary School 0.1 miles, St Mary's Catholic Primary 0.4 miles, Rush Green Junior School 0.6 miles
Secondary Schools: Hornchurch High School 0.4 miles, Raphael Independent School 0.7 miles, Abbs Cross



Transport Information

Train Stations: Elm Park 0.7 miles, Romford 1.0 miles, Hornchurch 1.2 miles, Dagenham East 1.4 miles, Emerson Park 1.4 miles, Gidea Park 1.7 miles



Address

Chestnut Avenue, Hornchurch, Essex, RM12



Directions

For directions to this property please contact us.

