



Price
£550,000

Freehold

3x  1x  2x 

**Regency Gardens,
Hornchurch, Essex,
RM11**

OVER 60?

Secure this property
for up to **59% less!**



Video Tour available

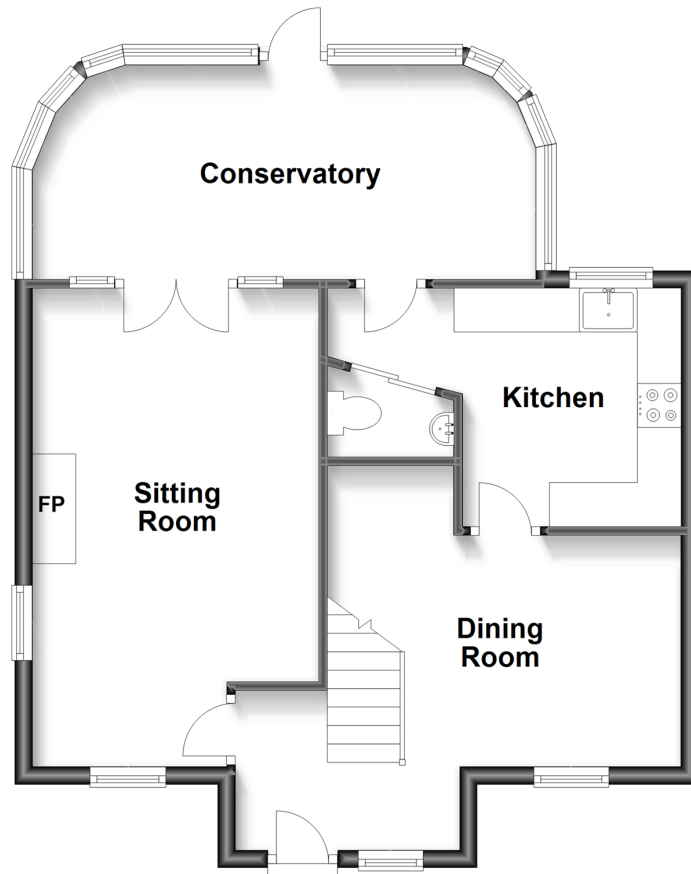


**DOUGLAS
ALLEN**

Helping you move forwards

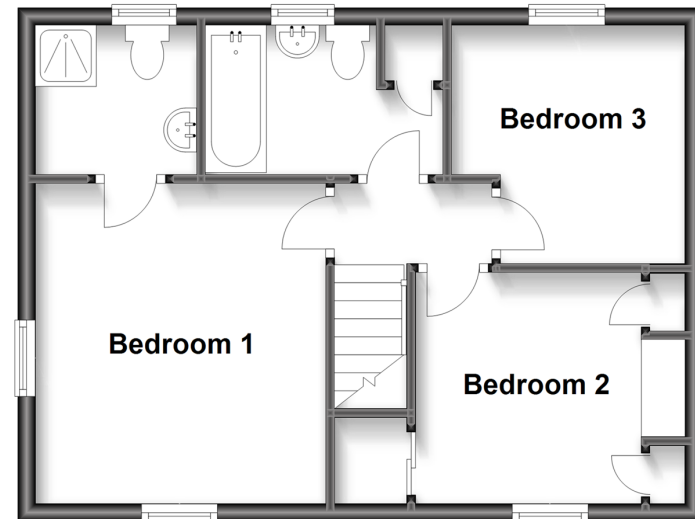
Ground Floor

Approx. 57.1 sq. metres (614.2 sq. feet)



First Floor

Approx. 40.6 sq. metres (436.7 sq. feet)



Accommodation

GROUND FLOOR

Entrance Hall

Lounge: 17'11 x 10'9 (5.46m x 3.28m)

Dining Room : 13'1 x 8'7 (3.99m x 2.62m)

Kitchen: 13'4 x 8'11 (4.07m x 2.72m)

Conservatory: 19'0 x 8'0 (5.80m x 2.44m)

Cloakroom

FIRST FLOOR

Landing

Bedroom 1 : 11'11 x 10'11 (3.63m x 3.33m)

En suite: 6'4 x 5'0 (1.93m x 1.53m)

Bedroom 2 : 10'0 x 8'9 (3.05m x 2.67m)

Bedroom 3: 10'0 x 8'11 (3.05m x 2.72m)

Bathroom: 8'11 x 5'9 (2.72m x 1.75m)

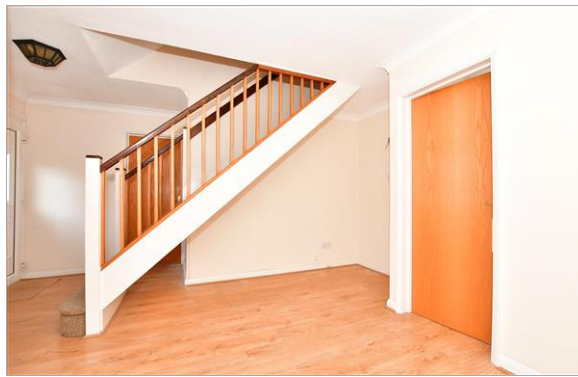
OUTSIDE

Rear Garden

Detached Garage

Summer House

Parking



Main features

- A well presented family home in a cul de sac location
- Ground floor cloakroom
- Conservatory
- En suite to bedroom 1
- Low maintenance rear garden
- Detached garage
- Close to local amenities
- Offered chain free



Nearest Schools

Primary Schools: Towers Junior School 0.0 miles, Langtons Junior School 0.5 miles, St Mary's Catholic Primary 0.6 miles
Secondary Schools: The Frances Bardsley School for Girls 0.6 miles, Hornchurch High School 0.7 miles



Transport Information

Train Stations: Emerson Park 0.4 miles, Gidea Park 1.0 miles, Romford 1.2 miles. Underground Hornchurch 0.9 miles, Upminster Bridge 1.2 miles, Elm Park 1.2 miles



Address

Regency Gardens, Hornchurch, Essex, RM11



Directions

For directions to this property please contact us.



Call Hornchurch Branch 01708 437777 ■ douglasallen.co.uk



- A private rental licensing scheme applies to some properties in this area, please contact us before proceeding
- Appliances & services are untested, dimensions are approximate and floor plans are not to scale

- Legal advice should be taken to verify fixtures/fittings, planning, alterations and/or lease details
- Through a Homewise Home For Life Plan people aged 60+ can secure this property for up to 59% less, by purchasing a Lifetime Lease.



51915038/20221031/DT/DT