



Price

£200,000

Leasehold

2x  1x  1x 

**Hornchurch Road,
Hornchurch, Essex,
RM11**

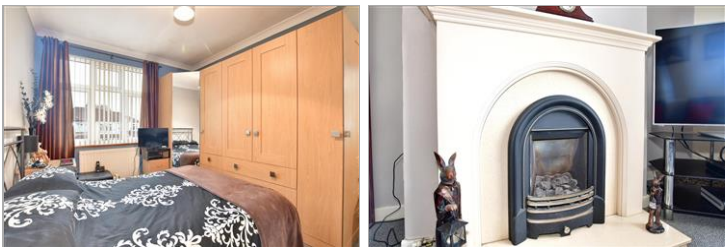


Video Tour available



**DOUGLAS
ALLEN**

Helping you move forwards



Main features

- Perfect investment opportunity or first purchase
- Brilliant location for schools, transport links & amenities
- Joint responsibility for the maintenance of the structure - please seek independent legal advice'

Accommodation

FIRST FLOOR

Entrance Hall

Lounge/diner: 12'6 x 12'6 (3.81m x 3.81m)

Kitchen: 12'6 x 6'6 (3.81m x 1.98m)

Bedroom 1: 12'0 x 9'8 (3.66m x 2.95m)

Bedroom 2: 13'0 x 9'5 (3.97m x 2.87m)

Shower Room: 10'0 x 4'4 (3.05m x 1.32m)

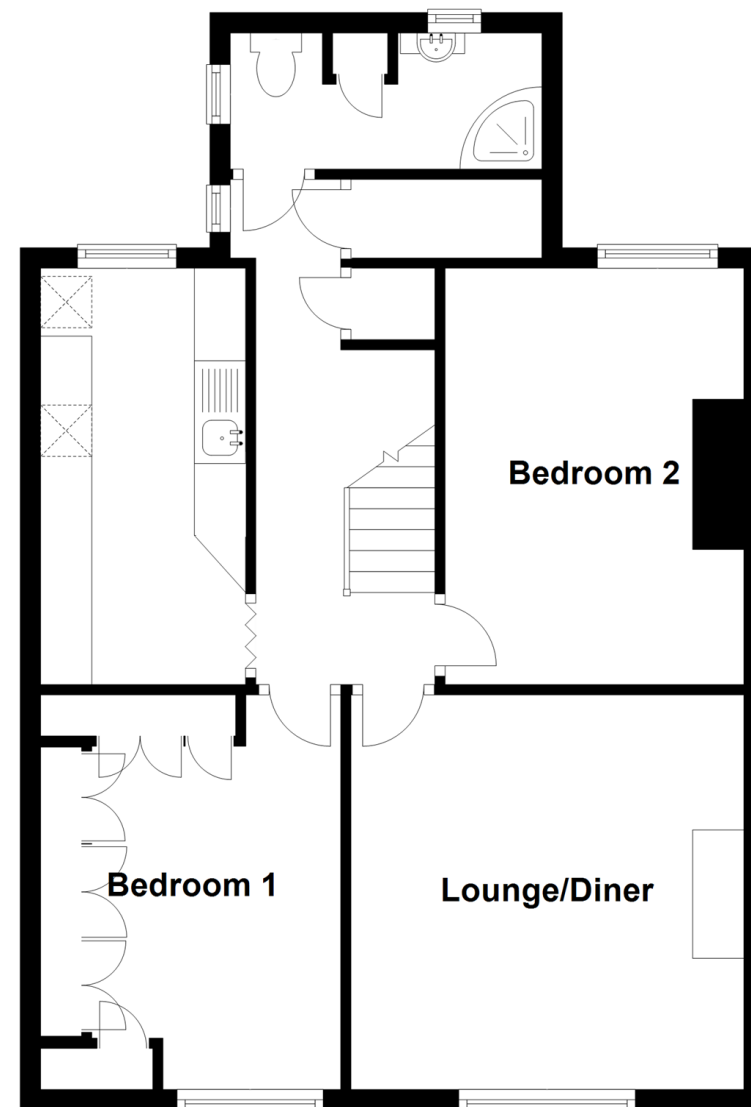
OUTSIDE

Private Rear Garden

Allocated Parking

First Floor

Approx. 62.2 sq. metres (669.3 sq. feet)



Call Hornchurch - 01708 437777 ■ douglasallen.co.uk

- A private rental licensing scheme applies to some properties in this area, please contact us before proceeding
- Legal advice should be taken to verify fixtures/fittings, planning, alterations and/or lease details
- Appliances & services are untested, dimensions are approximate and floor plans are not to scale