



**Guide Price**  
**£400,000**

**Freehold**

2x  1x  1x 

**Central Drive,  
Hornchurch, Essex,  
RM12**

**OVER 60?**

Secure this property  
for up to **59% less!**

 **DOUGLAS  
ALLEN**  
Helping you move forwards





## Main features

- Refurbished and extended bungalow in a great location
- Whole new heating system recently installed
- Off road parking at the front
- Un-overlooked rear garden
- New kitchen, shower room, and flooring

## Accommodation

### GROUND FLOOR

Hallway

Bedroom 1: 13'7 x 10'2 (4.14m x 3.10m)

Bedroom 2: 10'8 x 7'11 (3.25m x 2.41m)

Shower Room: 6'8 x 6'7 (2.03m x 2.01m)

Kitchen/Breakfast Room: 13'8 x 10'10 (4.17m x 3.30m)

Breakfast Room: 10'5 x 6'2 (3.18m x 1.88m)

Lounge/Dining Room: 20'9 x 10'4 (6.33m x 3.15m)

### OUTSIDE

Rear Garden

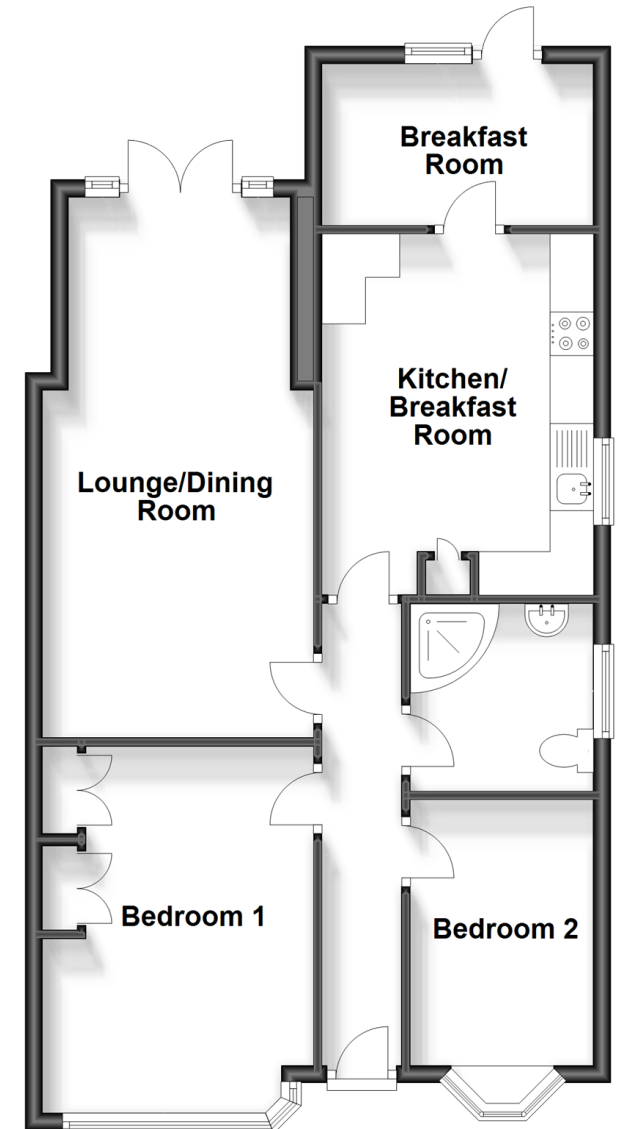
Off Road Parking

**Call Hornchurch - 01708 437777 ■ [douglasallen.co.uk](http://douglasallen.co.uk)**

- A private rental licensing scheme applies to some properties in this area, please contact us before proceeding
- Legal advice should be taken to verify fixtures/fittings, planning, alterations and/or lease details
- Appliances & services are untested, dimensions are approximate and floor plans are not to scale
- Through a Homewise Home For Life Plan people aged 60+ can secure this property for up to 59% less, by purchasing a Lifetime Lease.

## Ground Floor

Approx. 68.9 sq. metres (741.6 sq. feet)



51914210/20231115/CC1/DT