



**Offers In
Excess Of
£140,000
Leasehold**

1x  1x  1x 

**Watermans, Junction
Road, Romford, Essex,
RM1**



Video Tour available



**DOUGLAS
ALLEN**

Helping you move forwards



Main features

- One bedroom ground floor retirement flat in a great location for Romford and local amenities
- Well kept communal grounds
- Guest bedroom available
- Communal Lounge for all residence
- Large bedroom with built in wardrobes
- On site housing manager

Accommodation

GROUND FLOOR

Hallway

Shower room

Bedroom : 16'9 into fitted wardrobes x 8'9 into fitted wardrobes (5.11m x 2.67m)

Living room: 14'3 x 10'6 (4.35m x 3.20m)

Kitchen : 7'6 x 7'3 (2.29m x 2.21m)

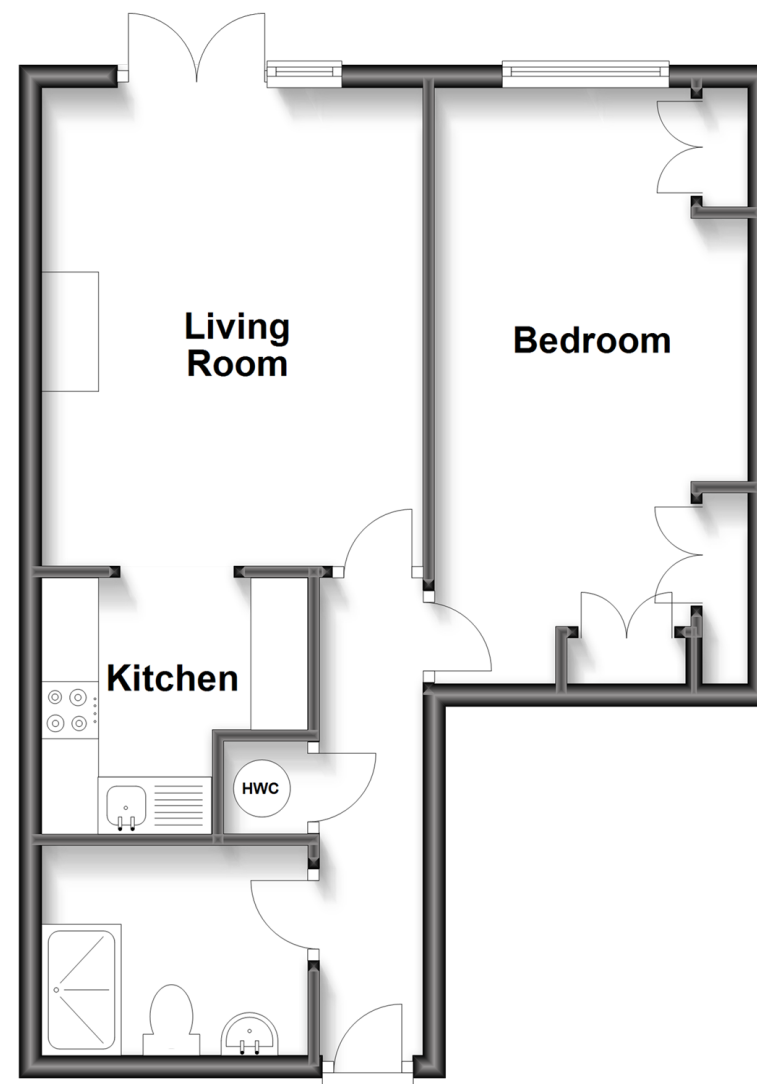
OUTSIDE

Communal Grounds

Parking

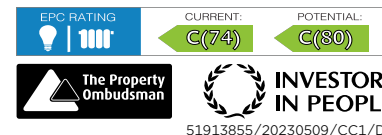
Ground Floor

Approx. 43.3 sq. metres (466.5 sq. feet)



Call Hornchurch - 01708 437777 ■ douglasallen.co.uk

- A private rental licensing scheme applies to some properties in this area, please contact us before proceeding
- Legal advice should be taken to verify fixtures/fittings, planning, alterations and/or lease details
- Appliances & services are untested, dimensions are approximate and floor plans are not to scale



51913855/20230509/CC1/DT